

**SLUDGE PRO®**  
**DOUBLE DISC PUMPS**  
**4DDWP-SS™**

**BENEFITS**

TRANSFER FROM  
0-250 GPM

PUMP UP TO 2½" SOLIDS

MAX. HEAD TO 184'  
(80 PSI)

NO REGULAR  
MAINTENANCE  
REQUIRED

TWO YEAR LIMITED  
WARRANTY\*

IDEAL FOR ABRASIVE,  
VISCOUS AND SHEAR  
SENSITIVE MEDIA

RUNS DRY = NO DAMAGE

SELF PRIMING PUMP

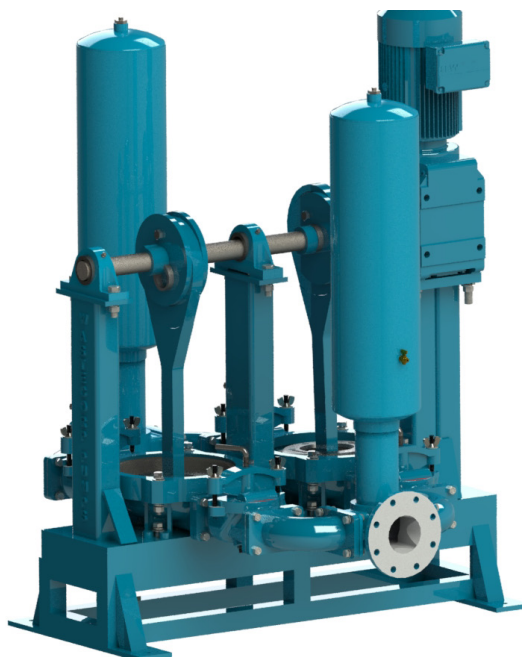
HIGHER OPERATING  
PRESSURE

NEXT GENERATION DISC  
PUMP TECHNOLOGY

\*Contact factory for warranty details.

**WASTECORP.COM**

**CLACK VALVE**  
SOLIDS MANAGEMENT TECHNOLOGY



Patent Pending

## ADVANCED CLACK VALVE DISC PUMPS.

Sludge Pro® clack valve 4DDWP disc pumps use innovative smart technology to elevate double disc pumps to a new level. Wastecorp clacks withstand the rigors of daily pumping at municipal WWTP's, food processing facilities and other industrial sludge pumping applications. Plus, Sludge Pro Pumps are operator and maintenance friendly. No regular maintenance required.

### SLUDGE PRO® 4DDWP - DOUBLE DISC PUMPS



#### Advanced Smart Clack Solids Management Technology

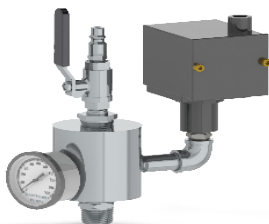
- Unobstructed flow path allows sludge and solids to efficiently transfer through the pump
- Self-valving clack flexes open to pass solids up to 2 ½"
- Advanced non-slamming properties reduces pulsation and increases efficiency



#### Innovative Trunnion Options

Not all pumping applications are alike, that's why Wastecorp offers you the right elastomer for your application including:

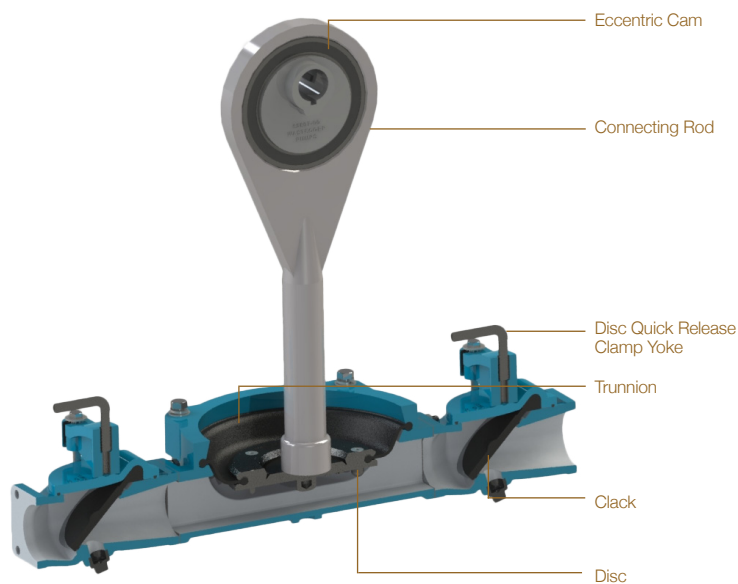
- Santoprene®
- Teflon®
- Buna-N®
- Nordel®
- Viton®
- Neoprene



#### Pressure Sensor Assembly

Provides safe protection against dead heading, closed valves or other discharge blockages that can damage the pump. Also permits direct charging of pulsation dampener and access for cleaning.

## CUT AWAY



## TECHNICAL SPECIFICATIONS

<b>Model</b>	<b>Sludge Pro® 4DDWP</b>
<b>Connection Size</b>	4" 150# Flanged
<b>Typical Flow Range</b>	0-250 GPM
<b>Solids Handling</b>	Max 2½"
<b>Displacement</b>	2.28 gal/rev
<b>Max. Suction Lift</b>	25'
<b>Max. Discharge Head</b>	184' (80 psi) (5.1 bar)
<b>Max. Liquid Temp.</b>	350°F (176°C)
<b>Operating Speed</b>	up to 110 RPM

## MATERIALS OF CONSTRUCTION

	<b>Standard</b>	<b>Optional</b>
<b>Trunnion</b>	<b>Neoprene</b> (TPE) 0°F to 200°F	<b>Santoprene</b> -40°F to +225°F <b>Buna-N®</b> +10°F to +180°F <b>Viton®</b> -40°F to +350°F <b>Teflon®</b> (PTFE) +40°F to +220°F <b>Nordel®</b> -60°F to +280°F
<b>Discs</b>	Ductile Iron, ASTM A 536, Grade 65-45-12	
<b>Clack Valve</b>	Neoprene	Viton, EPDM
<b>Sectionalized Construction</b>	Cast Iron ASTM A48 Class 30	See Coating Options Below
<b>Pedestal</b>	Ductile iron ASTM A 536, Grade 65-45-12	
<b>Eccentric Cam</b>	Ductile iron ASTM A 536, Grade 65-45-12	
<b>Drive Shaft</b>	400 Series SS	
<b>Connecting Rod</b>	Ductile iron ASTM A 536, Grade 65-45-12	
<b>Base Frame</b>	Heavy Duty Fabricated Steel	304SS, Galvanized Steel, 316 SS

## DRIVE SYSTEM OPTIONS

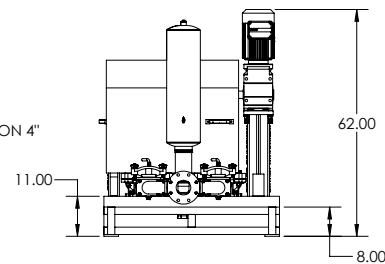
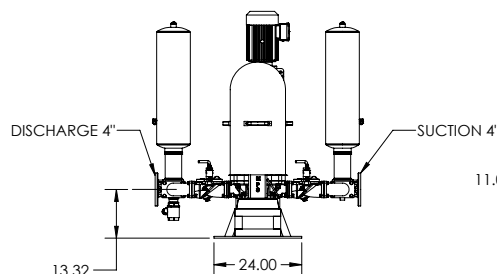
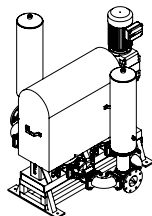
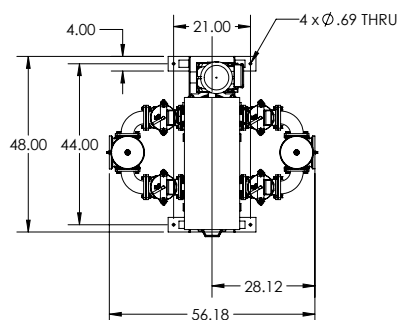
<b>Direct Dive</b>	Electric Motor
<b>Optional</b>	Air, hydraulic, belt driven
<b>Engine Driven</b>	Gas or diesel

Note: Consult factory for applications exceeding maximum pressure and/or temperature indicated.

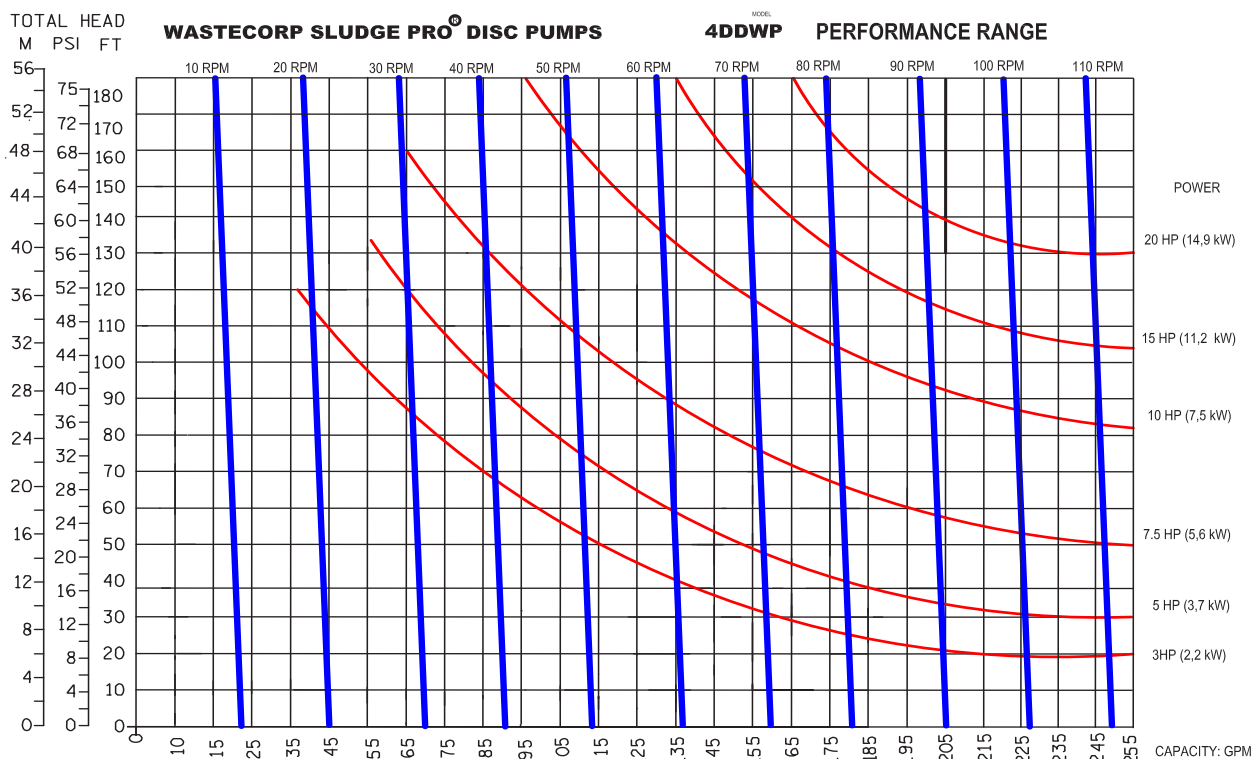
## WETTED CASTING COATING OPTIONS

Xylan, ETFE / PTFE, Dura-S, Nitrile, Neoprene, Nordel, Viton, Hypalon

## DIMENSIONAL DRAWING



## PUMP CURVE



### SUCTION LIFTS

Dry Prime Static Suction Lift: 25' (7.62m)

Wet Prime: 25" Hg 28.4' (8.6m)

CURVE NO.: 63911-00 MODEL: 4DDWP

SIZE: 4" x 4" RPM: VARIOUS

SP. GR.: 1.0 @ 68°F

Displacement Per Stroke: 2.28 Gal/Revolution

Sludge Pro® and Wastecorp® are registered trademarks of Wastecorp (WPC).  
Specifications and descriptions are subject to revision without notice. Wastecorp is not liable for any inaccuracies or omissions.  
Wastecorp is not liable for any consequential, incidental or indirect damages relating to these specifications or their use.

Curve based on water (specific gravity = 1.0), with 10 foot static lift.  
The performance curve shown were taken from actual tests of standard production pumps, and reflect an average performance of the pump indicated.

REV. DS 4/2015