

WASTECORP PRIME LINE™

Wastecorp Prime Line™ technology is capable of rapid (50 CFM) self-priming up to 28 Feet (8 meter) depths below the pump. The fast priming positive displacement vacuum pump ensures that no water carry-over occurs thanks to the reliable inlet float box chamber.

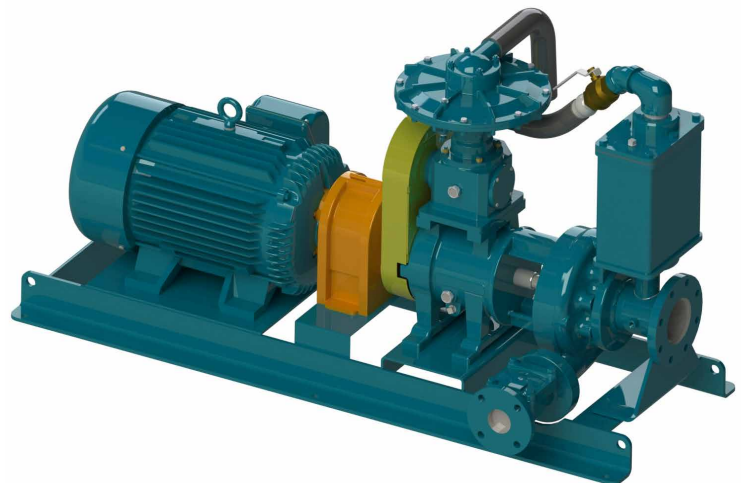
HOW IT WORKS

The Wastecorp Prime Line™ is in fact two pumps in one. The primary pump being a centrifugal pump and a positive displacement self-priming diaphragm pump.

The diaphragm pump causes a lower pressure zone inside the suction line which allows atmospheric pressure (1.00 bar / 14.5 psi) to push liquid up the suction line until it reaches the centrifugal pump.

Once the centrifugal pump is primed and dynamically stable, the liquid forces the float valve in the chamber to lift, sealing off the air intake line via a rubber valve connected to the cantilever arm.

If the centrifugal pump ever lose its prime, the float ball will drop and open the rubber valve allowing the diaphragm pump to evacuate the air. This process is fully automatic and activates whenever the system experiences air in the suction line.



Specifications and illustrations are subject to revision without notice. Wastecorp makes no representation regarding the completeness or accuracy of this information and is not liable for any consequential, incidental or indirect damages relating to these specifications.