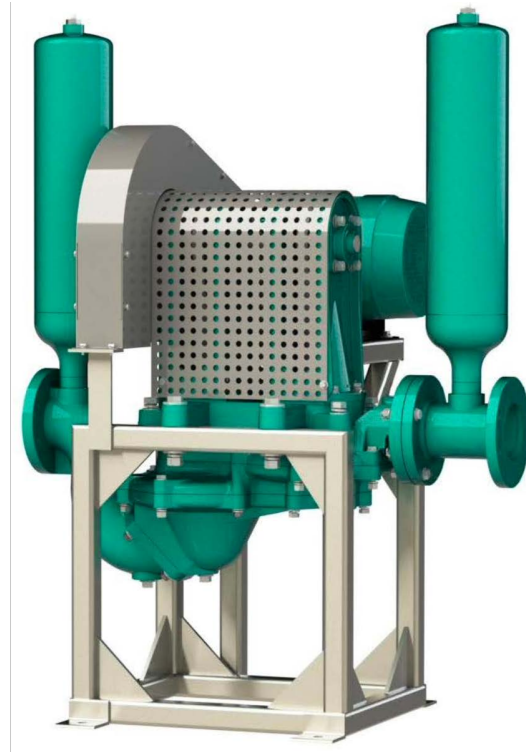


## FOR TOUGH PUMPING JOBS, NOTHING BEATS A SLUDGE PRO PUMP

- No regular maintenance required
- Runs dry without damage
- Maintain-in-place Guide Pilot®
- Seal-less, gland-less design
- No packing or mechanical seals
- Low shear positive displacement performance
- No close tolerances
- Low friction design
- No rubbing action, allows pump to transfer highly abrasive slurries



### GENERAL APPLICATIONS

- Primary sludge pump
- Thickened sludge transfer
- Scum transfer
- Belt filter press feed
- Industrial slurry and sludge transfer
- Centrifuge feed
- Rotary press feed
- Screw press feed pump
- Waste activated sludge
- Food process slurries



**Induced double acting discs work  
in unison to achieve  
non-clogging performance**



## TECHNICAL SPECIFICATIONS

<b>Model</b>	<b>Sludge Pro®3DDMK</b>
<b>Connection Size</b>	3" 150# Flanged
<b>Typical Flow Range</b>	0-120 GPM
<b>Solids Handling</b>	Up to 3/4" solids
<b>Max. Discharge Head</b>	75 psi
<b>Operating Speed</b>	up to 400 RPM

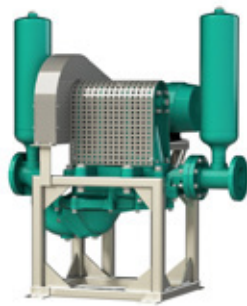
## MATERIALS OF CONSTRUCTION

	Standard	Optional
<b>Trunnions &amp; Discs</b> Includes multi-layer fabric reinforced internals	<b>Neoprene</b> (TPE) -10°F to 200°F	<b>Buna-N</b> +10°F to +180°F <b>Viton</b> -40°F to +350°F <b>HNBR</b> +10°F to +220°F <b>EPDM</b> +10°F to +280°F
<b>Pump Bodies &amp; Swan Neck</b>	Cast iron	
<b>Clack Valve</b>	Neoprene	Buna-N, Viton, EPDM, HNBR
<b>Pedestal Tower</b>	Aluminum	
<b>Eccentric</b>	Bronze alloy	
<b>Pump Shaft</b>	416 Series Stainless steel	
<b>Connecting Rods</b>	Aluminum	
<b>Base Frame</b>	Heavy Duty fabricated steel	304SS, 316 SS, Galvanized Steel,

## DRIVE & MOUNTING SYSTEM OPTIONS

<b>Standard: Side mount belt driven</b>	Electric Motor
<b>Optional</b>	Piggy back or direct drive rotating frame, hydraulic, engine or pneumatic

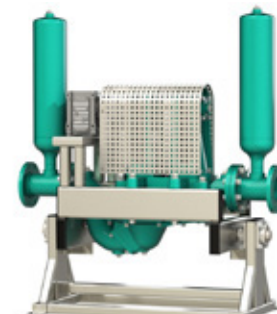
## CONFIGURATION OPTIONS



Side Mount Belt Driven (Standard)

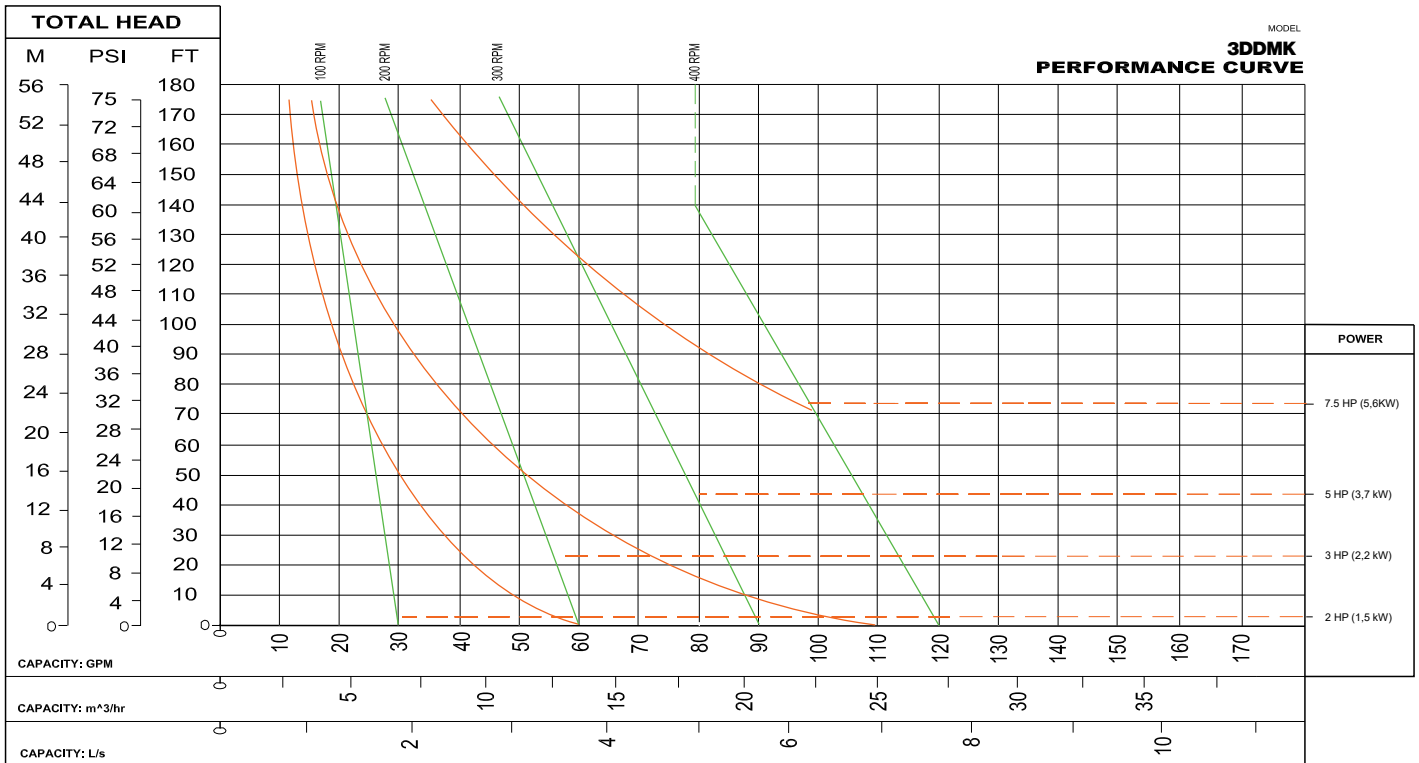


Piggy Back Configuration



Direct Drive With Rotating Frame

## PUMP CURVE



**SUCTION LIFTS**

Dry Prime: 7' (2.2m)  
 Re-prime: 18' (5.5m)  
 Flooded Suction: 28' (8.5m)

**MODEL:** 3DDMK

**SIZE:** 3"x 3"

**SP. GR.:** 1.0 @ 68°F

**RPM:** VARIOUS

**SOLID PASSAGE:**  $\varnothing$  3/4

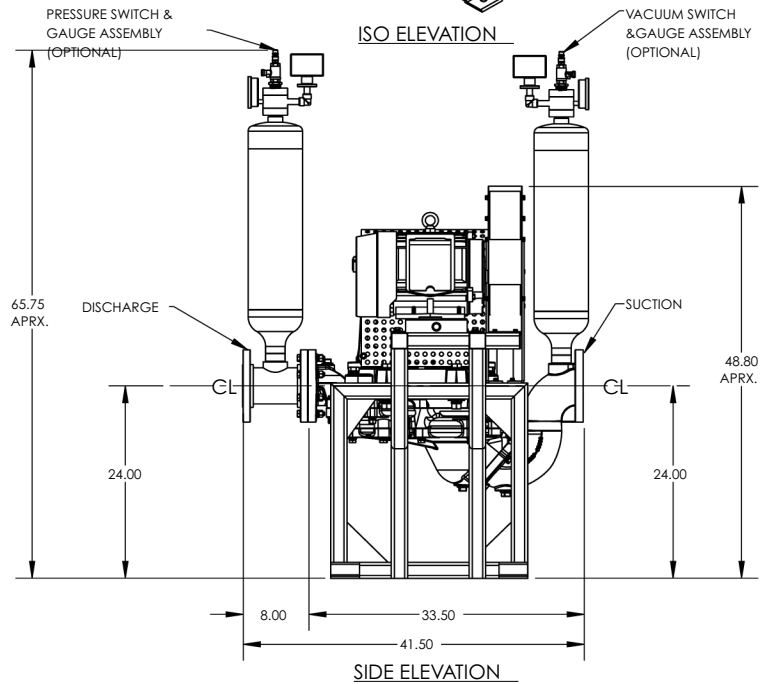
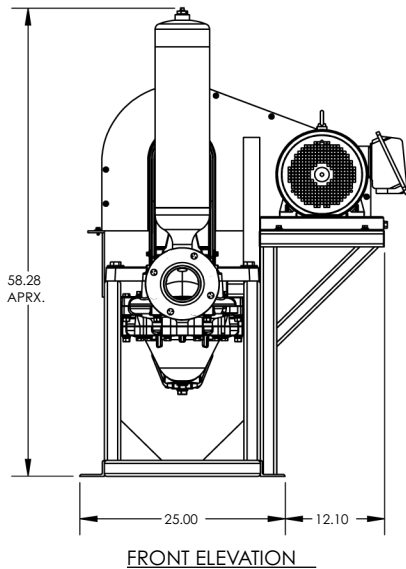
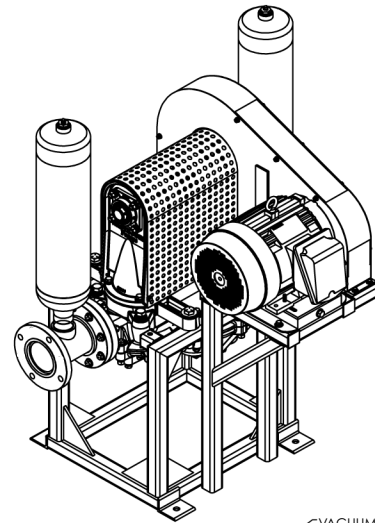
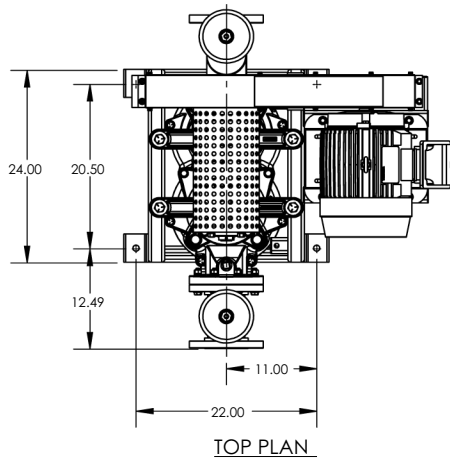
**Displacement Per Stroke:** 0.22 gal/rev@60 ft/ 200 rpm

Curve based on water (specific gravity = 1.0), with 10 foot static lift.  
 The performance curve shown were taken from actual tests of standard production pumps, and reflect an average performance of the pump indicated.

[www.wastecorp.com](http://www.wastecorp.com)

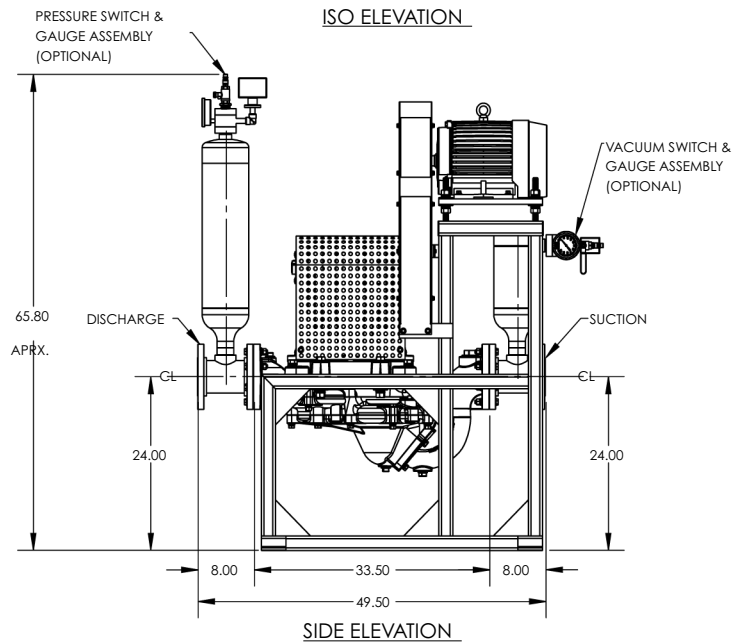
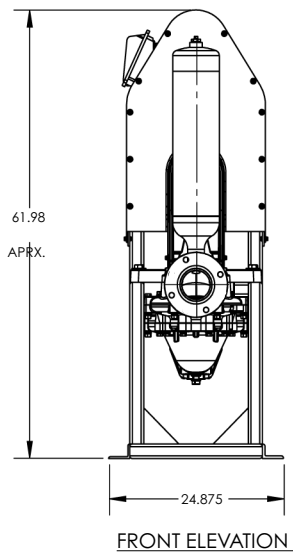
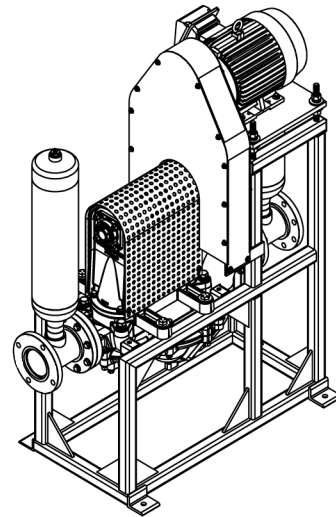
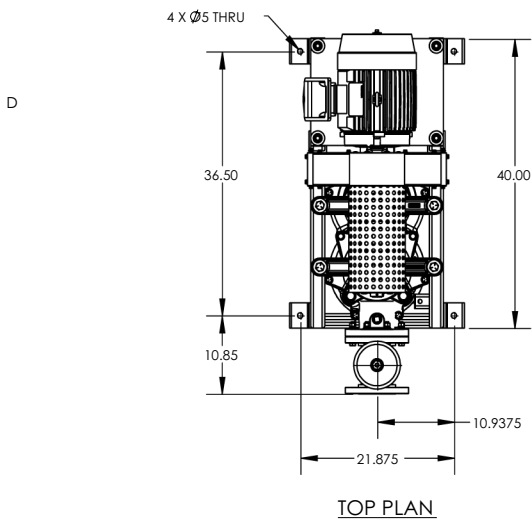
Revision: May 2006

## APPROXIMATE PUMP DIMENSIONS - SIDE MOUNT BELT DRIVEN (STANDARD)



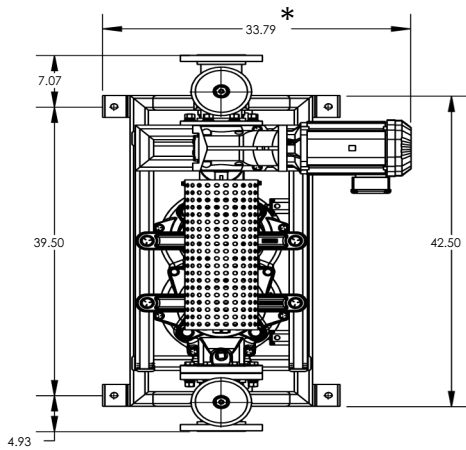
Approximate Weight: 1200 lbs.

**APPROXIMATE PUMP DIMENSIONS - PIGGY BACK MODEL (OPTIONAL)**

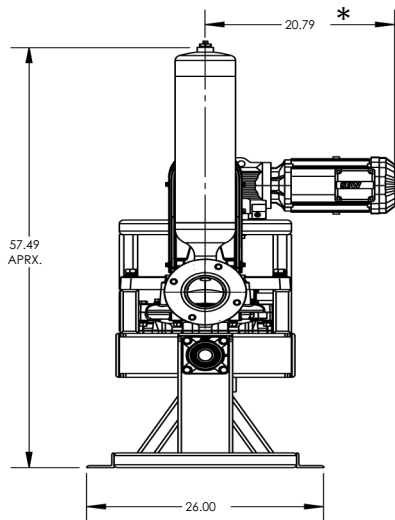


Approximate Weight: 1200 lbs.

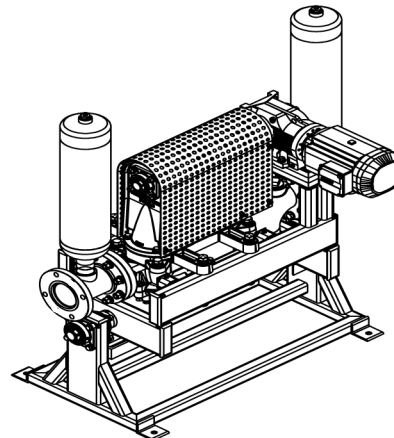
## APPROXIMATE PUMP DIMENSIONS - DIRECT DRIVE WITH ROTATING FRAME (OPTIONAL)



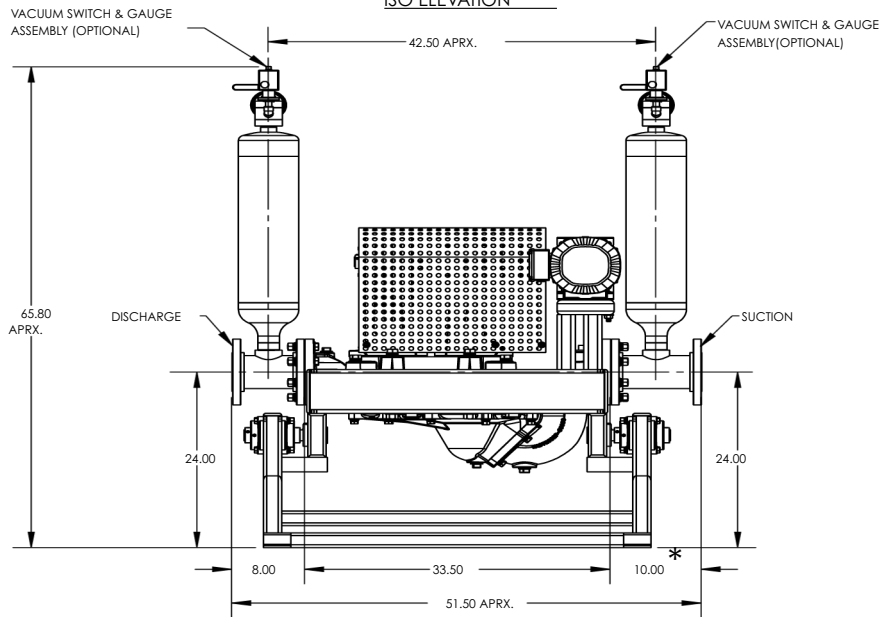
TOP PLAN



FRONT ELEVATION



ISO ELEVATION



SIDE ELEVATION

Approximate Weight: 1200 lbs.