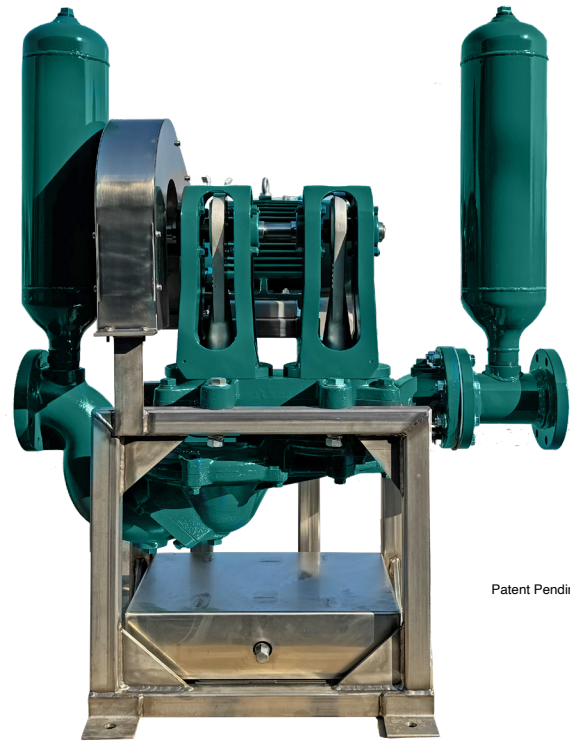


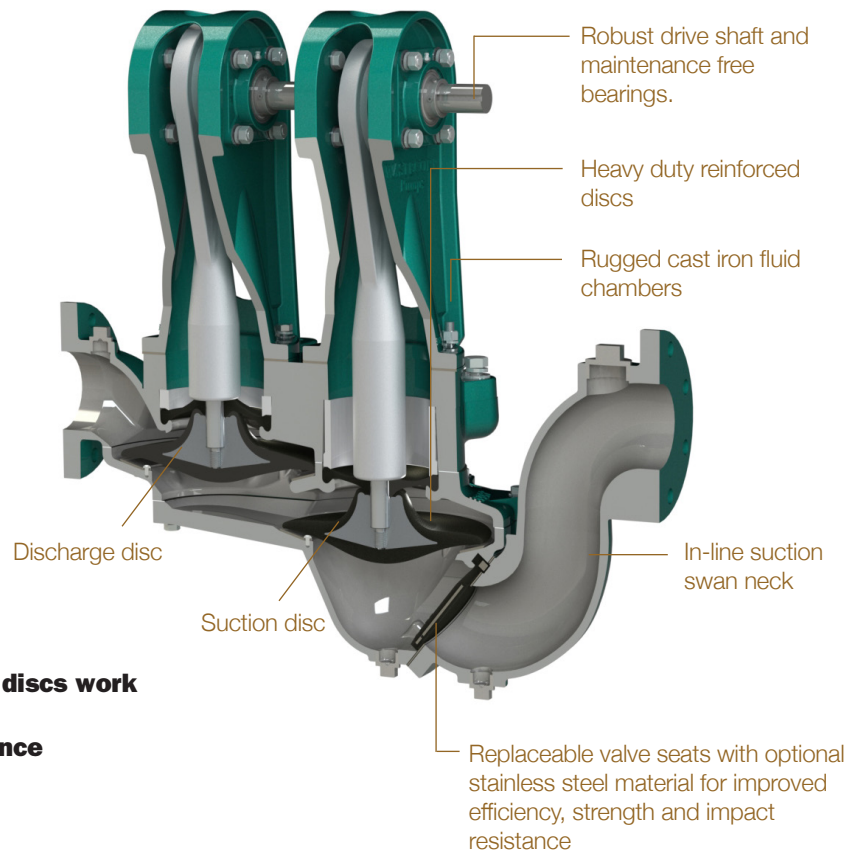
## FOR TOUGH PUMPING JOBS, NOTHING BEATS A SLUDGE PRO PUMP

- No regular maintenance required
- Runs dry without damage
- Maintain-in-place Guide Pilot®
- Seal-less, gland-less design
- No packing or mechanical seals
- Low shear positive displacement performance
- No close tolerances
- Low friction design
- No rubbing action, allows pump to transfer highly abrasive slurries



### GENERAL APPLICATIONS

- Primary sludge pump
- Thickened sludge transfer
- Lime slurry and lime sludge pumping
- Scum transfer
- Belt filter press feed
- Industrial slurry and sludge transfer
- Centrifuge feed
- Rotary press feed
- Screw press feed pump
- Waste activated sludge
- Food process slurries



**Induced double acting discs work  
in unison to achieve  
non-clogging performance**



## TECHNICAL SPECIFICATIONS

<b>Model</b>	Sludge Pro® 4DDMK
<b>Connection Size</b>	4" 150# Flanged
<b>Typical Flow Range</b>	0-165 GPM
<b>Solids Handling</b>	Up to 1¼" solids
<b>Max. Discharge Head</b>	75 psi
<b>Operating Speed</b>	up to 400 RPM

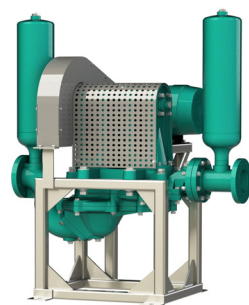
## MATERIALS OF CONSTRUCTION

	Standard	Optional
<b>Trunnions &amp; Discs</b>	Neoprene (TPE) -10°F to 200°F	Buna-N® +10°F to +180°F Viton® -40°F to +350°F HNBR® +10°F to +220°F EPDM +10°F to +280°F
<b>Includes multi-layer fabric reinforced internals</b>		
<b>Pump Bodies &amp; Swan Neck</b>	Cast iron	
<b>Clack Valve</b>	Neoprene	Buna-N, Viton, EPDM, HNBR
<b>Pedestal Tower</b>	Aluminum	
<b>Eccentric</b>	Bronze alloy	
<b>Pump Shaft</b>	416 Series Stainless steel	
<b>Connecting Rods</b>	Aluminum	
<b>Base Frame</b>	Heavy Duty fabricated steel	304SS, 316 SS, Galvanized Steel,

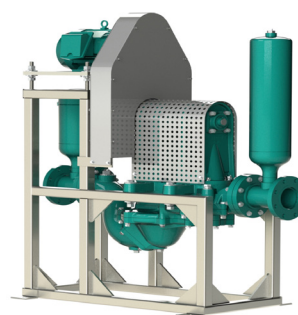
## DRIVE & MOUNTING SYSTEM OPTIONS

<b>Standard: Side mount belt driven</b>	Electric Motor
<b>Optional</b>	Piggy back or direct drive rotating frame, hydraulic, engine or pneumatic

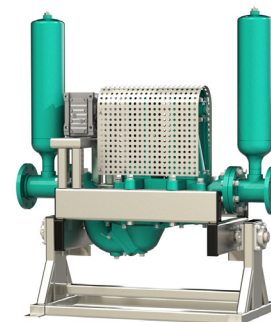
## CONFIGURATION OPTIONS



Side Mount Belt Driven (Standard)



Piggy Back Configuration



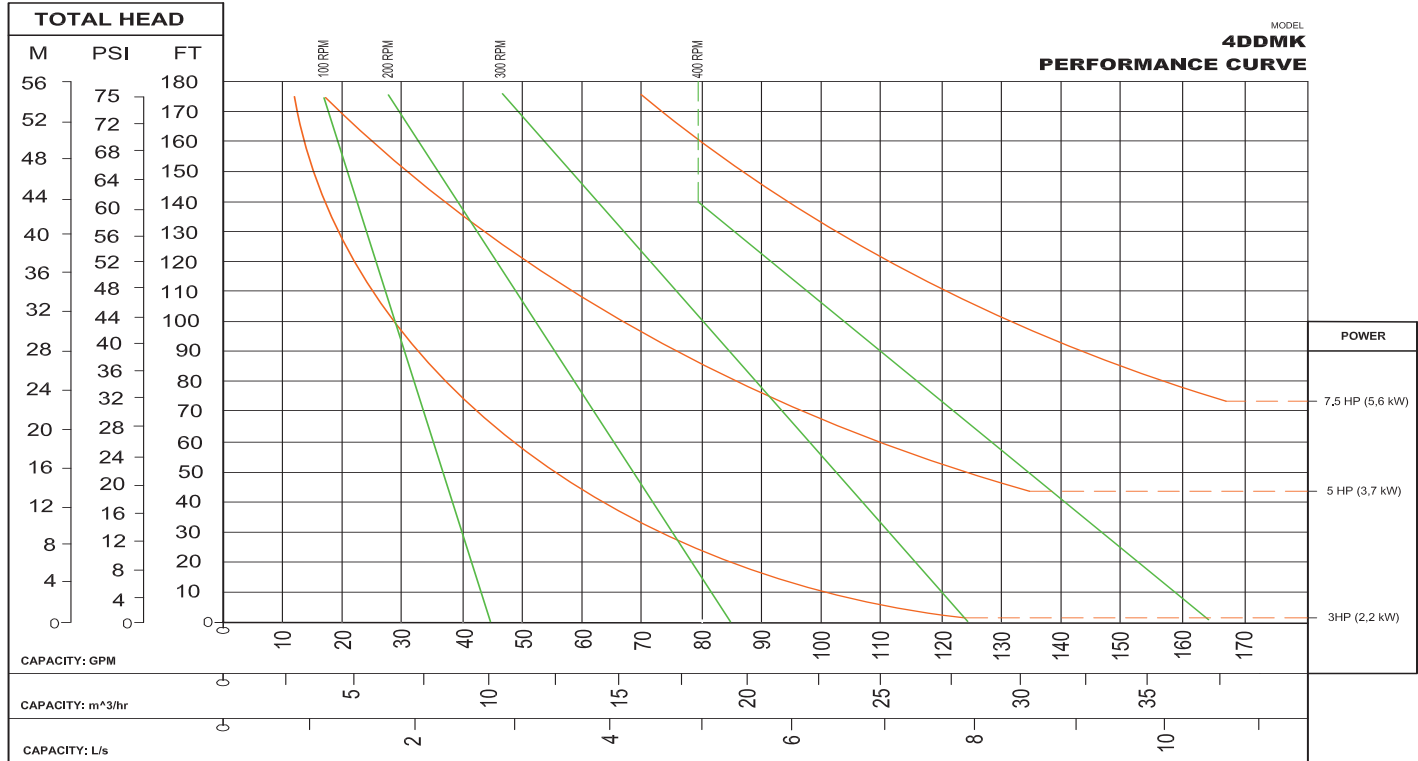
Direct Drive With Rotating Frame

SLUDGE PRO® DOUBLE DISC PUMPS  
**4DDMK™ Series**

# DOUBLE DISC PUMPS



## PUMP CURVE



**SUCTION LIFTS**

Dry Prime: 7' (2.2m)  
 Re-prime: 18' (5.5m)  
 Flooded Suction: 28' (8.5m)

**MODEL:** 4DDMK

**SIZE:** 4" x 4"

**RPM:** VARIOUS

**SP. GR.:** 1.0 @ 68°F

**SOLID PASSAGE:**  $\varnothing$  1-1/4"

**Displacement Per Stroke:** 0.315 gal/rev@60 ft/ 200 rpm

Curve based on water (specific gravity = 1.0), with 10 foot static lift. The performance curve shown were taken from actual tests of standard production pumps, and reflect an average performance of the pump indicated.

[www.wastecorp.com](http://www.wastecorp.com)

Sludge Pro® and Wastecorp® are registered trademarks of Wastecorp Pumps Inc. Specifications and illustrations are subject to revision without notice. Wastecorp is not liable for any incompleteness or inaccuracies. Wastecorp is not liable for any consequential, incidental or indirect damages relating to these specifications or their use.



Wastecorp Pumps USA  
 P.O. Box 70  
 Grand Island, New York 14072 | USA  
 Tel: 888.829.2783 | Fax: 888.883.3320  
[sales@wastecorp.com](mailto:sales@wastecorp.com)

Wastecorp Pumps Inc.  
 50 Shorncliffe Road  
 Toronto, Ontario M8Z-5K1 | Canada  
 Tel: 416.233.3000 | Fax: 416.233.2300  
[info@wastecorp.com](mailto:info@wastecorp.com)

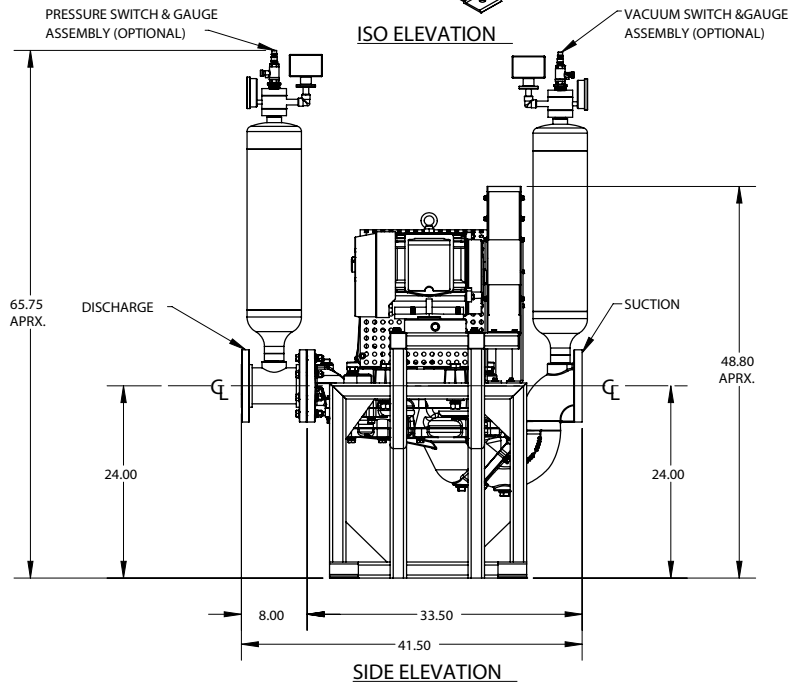
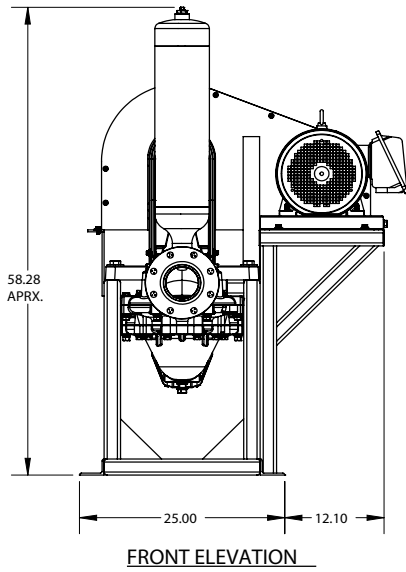
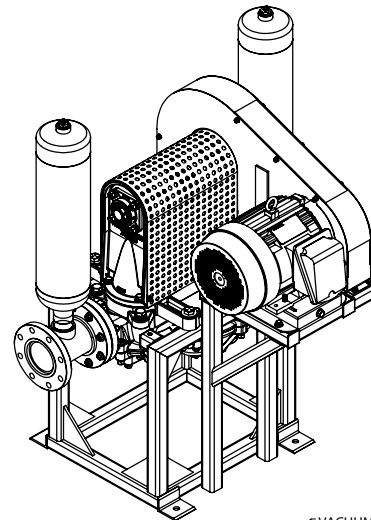
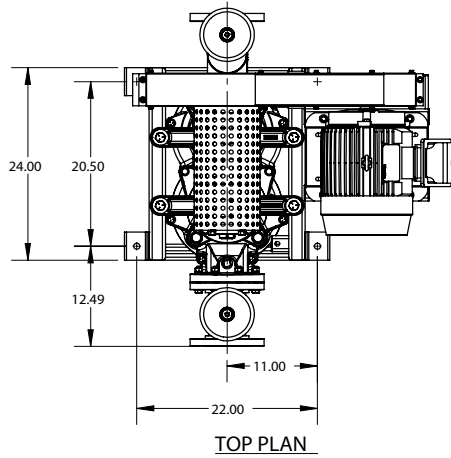
Wastecorp Pumps International  
 345 W. 85th Street  
 New York, New York 10024 | USA  
 Tel: 201.445.2882 | Fax: 201.445.3252  
[dstarr@wastecorp.com](mailto:dstarr@wastecorp.com)

SLUDGE PRO® DOUBLE DISC PUMPS  
**4DDMK™ Series**

**DOUBLE DISC PUMPS**

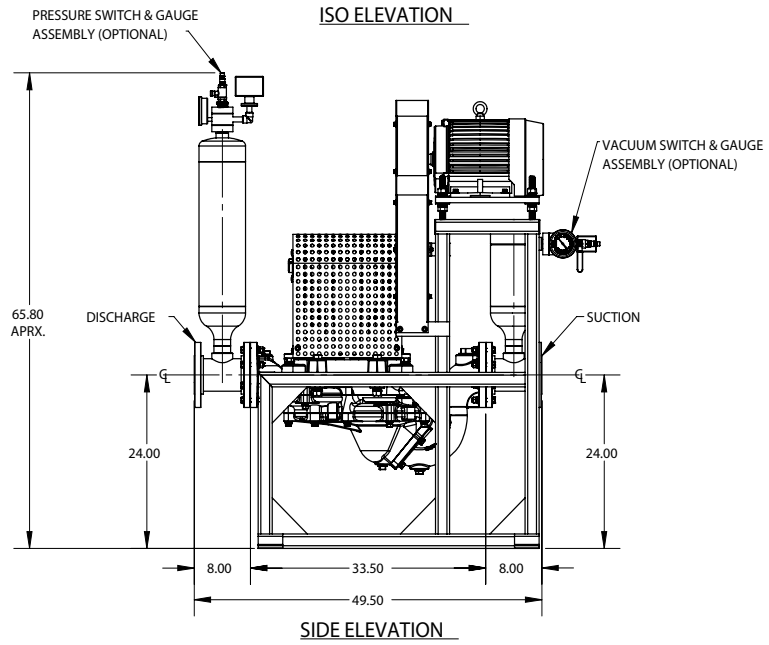
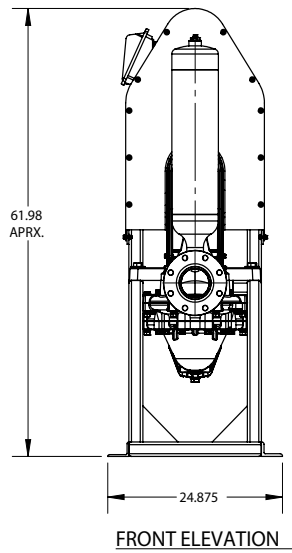
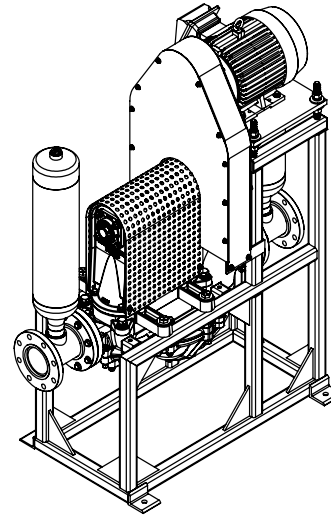
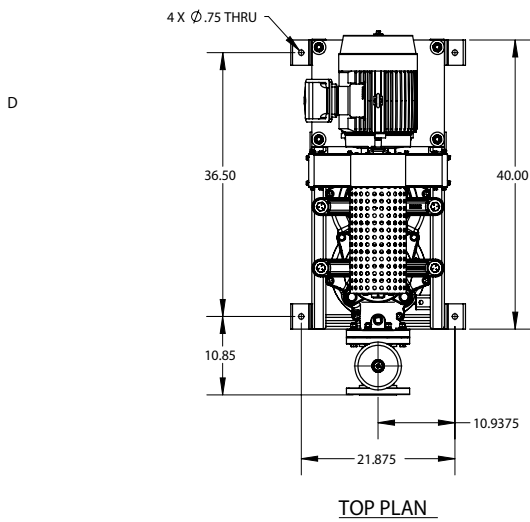


**APPROXIMATE PUMP DIMENSIONS - SIDE MOUNT BELT DRIVEN (STANDARD)**



Approximate Weight: 1200 lbs.

**APPROXIMATE PUMP DIMENSIONS - PIGGY BACK MODEL (OPTIONAL)**



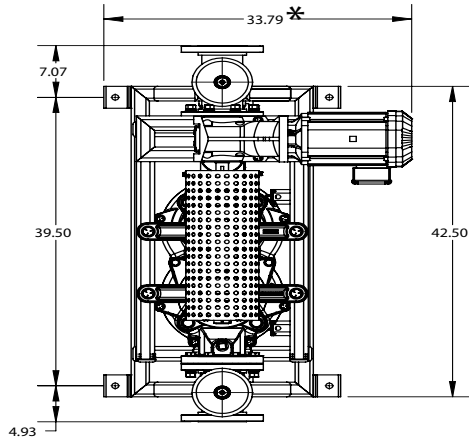
Approximate Weight: 1200 lbs.

SLUDGE PRO® DOUBLE DISC PUMPS  
**4DDMK™ Series**

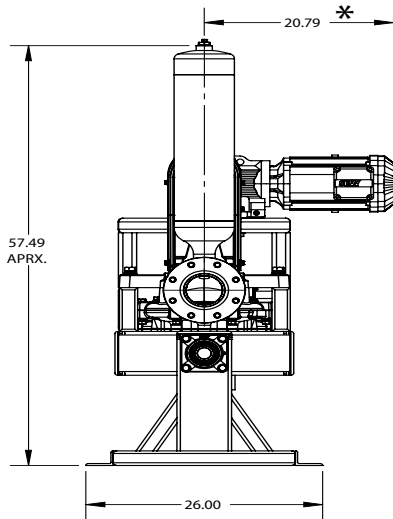
# DOUBLE DISC PUMPS



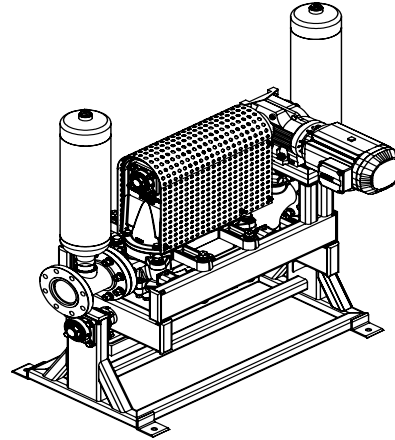
## APPROXIMATE PUMP DIMENSIONS - DIRECT DRIVE WITH ROTATING FRAME (OPTIONAL)



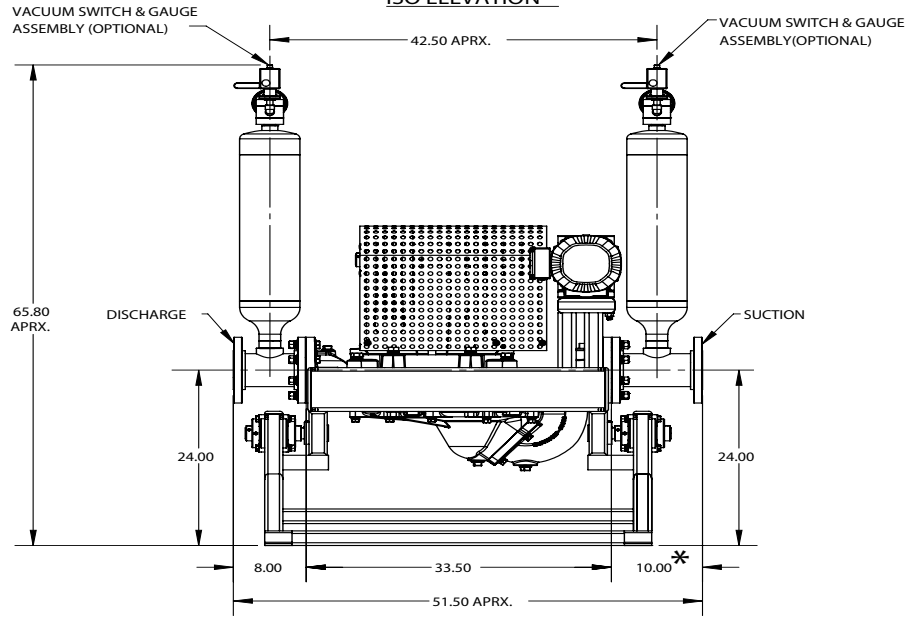
TOP PLAN



FRONT ELEVATION



ISO ELEVATION



SIDE ELEVATION

Approximate Weight: 1200 lbs.

Dimensions and weight are approximate. Wastecorp Pumps reserves the right to make changes in design, materials and operating ranges without notice.