

**SLUDGE PRO®**  
DISC PUMPS  
**6SDWP-SS™**

**BENEFITS**

TRANSFER FROM  
0-127 GPM

MAX. HEAD TO 184'  
(80 PSI)

NO REGULAR  
MAINTENANCE  
REQUIRED

TWO YEAR LIMITED  
WARRANTY\*

IDEAL FOR ABRASIVE,  
VISCOUS AND SHEAR  
SENSITIVE MEDIA

RUNS DRY = NO DAMAGE

SELF PRIMING PUMP

HIGHER OPERATING  
PRESSURE

NEXT GENERATION DISC  
PUMP TECHNOLOGY

\*Contact factory for warranty details.

**WASTECORP.COM**

**CLACK VALVE**  
SOLIDS MANAGEMENT TECHNOLOGY



Patent Pending

## THE WAIT IS OVER FOR A MORE ADVANCED DISC PUMP.

Sludge Pro® disc pumps are designed for a wide range of slurry and sludge process applications for the municipal, industrial, chemical and food processing industries. These durable leak-free pumps are self priming and can run dry without damage for uncompromising pumping reliability. Select from standard direct drive, belt driven, air, hydraulic and engine drive systems.

### SLUDGE PRO® 6SDWP - DISC PUMPS



#### Advanced Disc Pump Technology

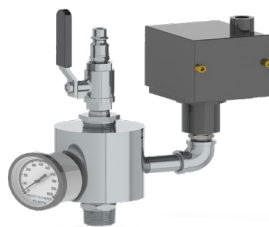
- Seal-less, glandless & leak free design
- OSHA compliant Guard
- Over six models to select from



#### Innovative Trunnion Options

Not all pumping applications are alike, that's why Wastecorp offers you the right elastomer for your application including:

- Santoprene®
- Teflon®
- Buna-N®
- Nordel®
- Viton®
- Neoprene



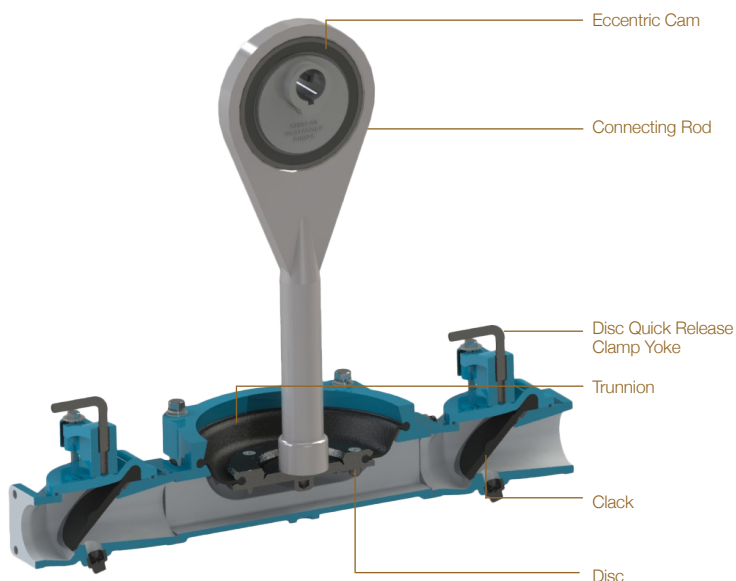
#### Pressure Sensor Assembly

Provides safe protection against dead heading, closed valves or other discharge blockages that can damage the pump. Also permits direct charging of pulsation dampener and access for cleaning.

rev August 29 2019



## CUT AWAY



## TECHNICAL SPECIFICATIONS

<b>Model</b>	<b>Sludge Pro® 6SDWP</b>
<b>Connection Size</b>	6" 150# Flanged
<b>Typical Flow Range</b>	0-127 GPM
<b>Solids Handling</b>	Max 1 1/4"
<b>Displacement</b>	1.15 gal/rev
<b>Max. Suction Lift</b>	25'
<b>Max. Discharge Head</b>	184' (80 psi) (5.1 bar)
<b>Max. Liquid Temp.</b>	350°F (176°C)
<b>Operating Speed</b>	up to 110 RPM

## MATERIALS OF CONSTRUCTION

	Standard	Optional
<b>Trunnion</b>	<b>Neoprene</b> (TPE) 0°F to 200°F	<b>Santoprene</b> -40°F to +225°F <b>Buna-N®</b> +10°F to +180°F <b>Viton®</b> -40°F to +350°F <b>Teflon®</b> (PTFE) +40°F to +220°F <b>Nordel®</b> -60°F to +280°F
<b>Discs</b>	Ductile Iron, ASTM A 536, Grade 65-45-12	
<b>Clack Valve</b>	EPDM	Buna-N
<b>Sectionalized Construction</b>	Cast Iron ASTM A48 Class 30	See Coating Options Below
<b>Eccentric Cam</b>	Ductile iron ASTM A 536, Grade 65-45-12	
<b>Drive Shaft</b>	400 Series SS	
<b>Connecting Rod</b>	Ductile iron ASTM A 536, Grade 65-45-12	
<b>Base Frame</b>	Heavy Duty Fabricated Steel	304SS, Galvanized Steel, 316 SS

## DRIVE SYSTEM OPTIONS

<b>Direct Dive</b>	Electric Motor
<b>Optional</b>	Air, hydraulic, belt driven
<b>Engine Driven</b>	Gas or diesel

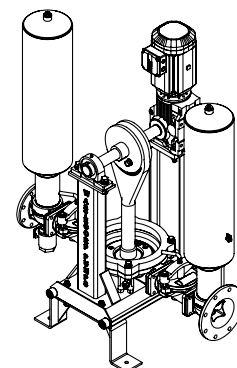
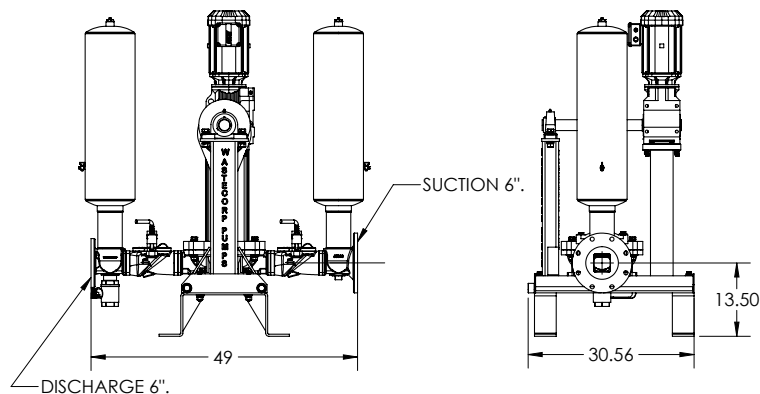
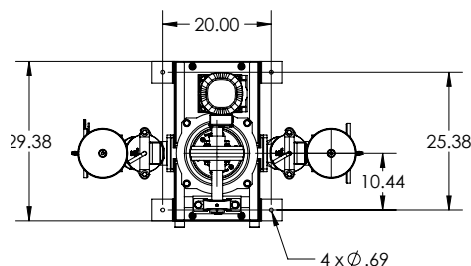
Note: Consult factory for applications exceeding maximum pressure and/or temperature indicated.

## WETTED CASTING COATING OPTIONS

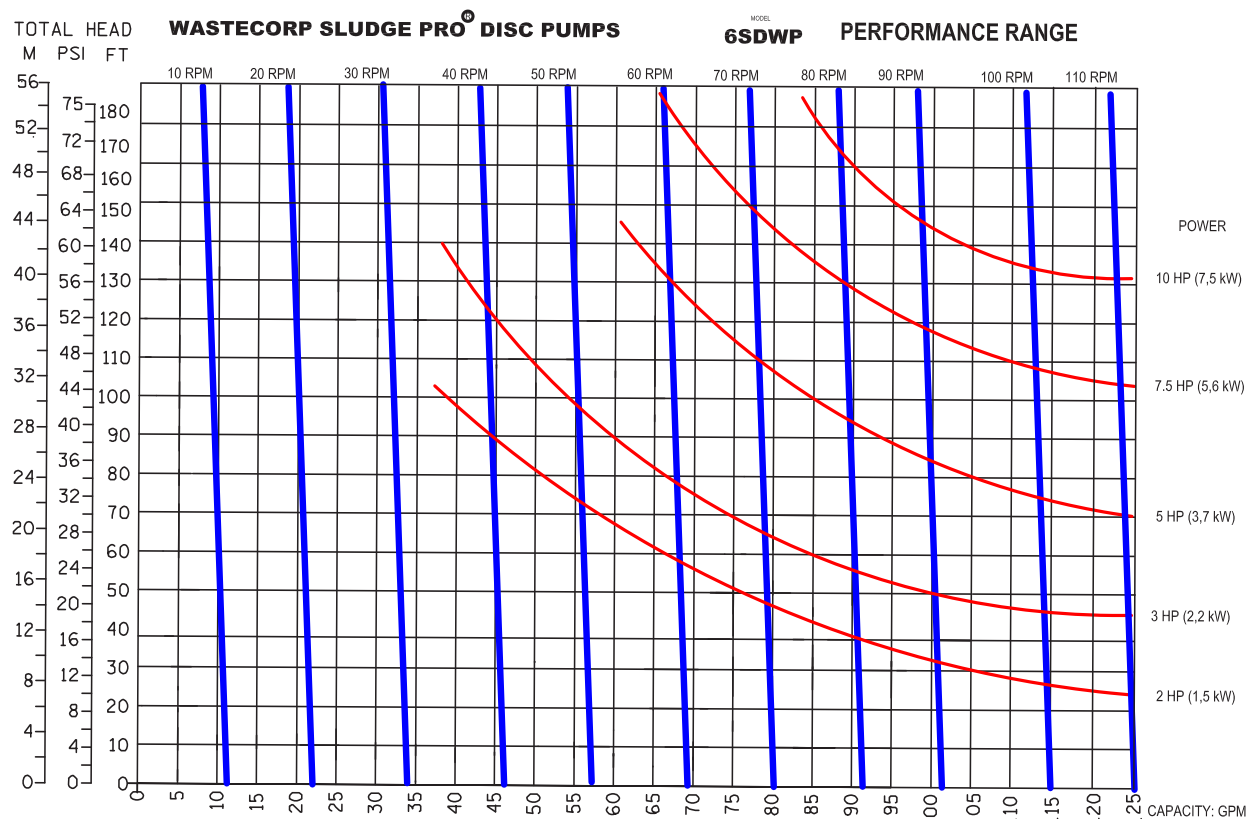
Xylan, ETFE / PTFE, Dura-S, Nitrile, Neoprene, Nordel, Viton, Hypalon



## APPROXIMATE PUMP DIMENSIONS



## PUMP CURVE



### SUCTION LIFTS

Dry Prime Static Suction Lift: 25' (7.62m)

Wet Prime: 25" Hg 28.4' (8.6m)

CURVE NO.: 63912-00 MODEL: 6SDWP

SIZE: 6" x 6" RPM: VARIOUS

SP. GR.: 1.0 @ 68°F

Displacement Per Stroke: 1.15 Gal/Revolution



Wastecorp Pumps USA  
P.O. Box 70  
Grand Island, New York 14072 | USA  
Tel: 888.829.2783 | Fax: 888.883.3320  
[sales@wastecorp.com](mailto:sales@wastecorp.com)

Wastecorp Pumps Inc.  
50 Shorncliffe Road  
Toronto, Ontario M8Z-5K1 | Canada  
Tel: 416.233.3000 | Fax: 416.233.2300  
[info@wastecorp.com](mailto:info@wastecorp.com)

Wastecorp Pumps International  
P.O. Box 70  
Grand Island, New York 14072 | USA  
Tel: 201.445.2882 | Fax: 201.445.3252  
[techsupport@wastecorp.com](mailto:techsupport@wastecorp.com)