



WASTECORP.
Pumps®

SLUDGE MASTER®

EXTREME DUTY PLUNGER PUMPS

EHPE SERIES™

PUMP MODELS

EHPE 942 Duplex

EHPE 943 Triplex

EHPE 944 Quadruplex

EHPE 1142 Duplex

EHPE 1143 Triplex

EHPE 1144 Quadruplex

FEATURES

HEAD LEVELS UP TO 300'

PUMP SEWAGE UP TO 370
GPM

160,000 PSI STRENGTH
SHAFTS

SPHERICAL SOLIDS:
1 3/4" (44.45 mm)

MAX PERCENT SOLIDS
@ 68F (20c) ambient temperature:

Industrial Sludge/Slurry: 30%
Dry Weight

Municipal Sludge/Slurry: 15%
Dry Weight

Sand/Clay mix suspended: 70%

Viscosity: 100,000 Centipoise

Specific Gravity: 2.2 to 2.4

SUCTION LIFTS:

Dry Prime: 22" Hg (25 feet)

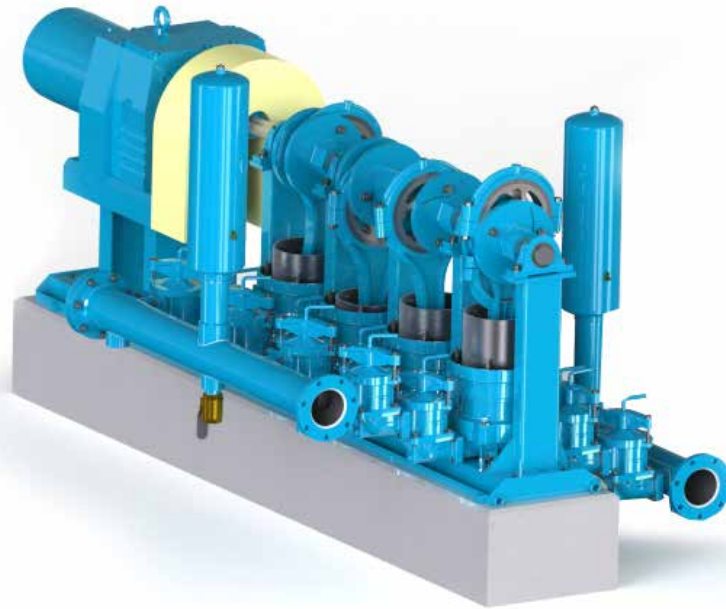
AIR HANDLING:

All others – 25 cu. ft./min at
max pressure of 30 psi.

REPLACEABLE BRONZE
INSERT FOR LOWER COST
PARTS

LEAK RESISTANT DESIGN

WASTECORP.COM



Higher Discharge Head Conditions? The EHPE Series is Your Pump.

Wastecorp's EHPE Series, plunger pumps are designed for extreme pumping conditions at wastewater treatment plants, military bases, aircraft carriers, industrial sewage treatment and much more. With up to 300 ft. of total discharge head capabilities, your facility will pump raw sewage, sludge and slurry, with proven pump technology since 1928.

The EHPE Series is available with our all new compact design with a vertical motor mount. You can also upgrade to the ultra seal Wastecorp Plunger Pac packing, bronze or stainless steel components and much more.

| General Specifications | Duplex EHPE-942 | Triplex EHPE-943 | Quadruplex EHPE-944 |
|--|--------------------|---------------------|------------------------|
| Number of plungers | 2 | 3 | 4 |
| Plunger dia. (in) | 9 | | |
| Air chambers | (2) 9"x30" | | |
| Flanged connections | 4" ANSI 125 # | 6" ANSI 150 # | 6" ANSI 150 # |
| Driver speed, RPM | 1800 | | |
| Number of pin positions | 11 | | |
| Max. strokes per min. | 45 | | |
| Max. stroke length (in) | 7.25 | | |
| Max. suction lift (ft) | 20 | | |
| Max. total head (ft) | 300 | | |
| Max. capacity (GPM) | 187 | 278 | 370 |
| Eccentric dia. (in) | 12 | | |
| Eccentric shaft tensile strength (PSI) | 160,000 | | |

Recommended Spare Parts

| | |
|-------------------|----------|
| Index shear pin | 60795-00 |
| Ball valve | 33956-00 |
| Bushing (bronze) | 52003-00 |
| Connecting insert | 15376-00 |
| Plunger 9" | 15041-02 |

| Pump Component | Standard Material | Optional Material |
|-------------------------|--|--|
| MAIN SHAFT | A4140/4142 High-Strength Alloy Steel | |
| ECCENTRIC | ASTM A48, Class 35 Grey Iron | |
| LUBRICATION | Manual Sight Feed Oiler, 5 oz | a) Automatic ball-type oiler with needle valve (5 oz), b) Electric Solenoid Oiler, c) Mechanical Force Feed Lubricator |
| DRIVEN/DRIVE FLANGES | ASTM A48, Class 35 Grey Iron | |
| BUSHING, SHEAR PIN | Hardened Steel | |
| SHEAR PIN | Fabricated Cold Rolled Steel | |
| CONNECTING ROD | ASTM A48, Class 35 Grey Iron | ASTM A536 Grade 65-45-12 Ductile Iron |
| ECCENTRIC BEARING LINER | Replaceable, Bronze SAE 660 | |
| BUSHING, WRIST PIN | SAE 941 Oil-Lite Bronze | |
| WRIST PIN | A4140/4142 High-Strength Alloy Steel | |
| VALVE SEAT | ASTM A48, Class 35 Grey Iron | Bronze Alloy, 316 Stainless Steel |
| BALL VALVE | 5-1/8" Urethane Rubber with Centralized Iron Core | |
| PLUNGER | ASTM A536 Grade 65-45-12 Ductile Iron | Coatings Available: a) Chrome Oxide, b) Aluminum Oxide, c) Tungsten Carbide, d) Hastelloy C, e) Stainless Steel |
| PUMP BODY | ASTM A536 Grade 65-45-12 Ductile Iron | |
| STUFFING BOX | ASTM A48, Class 35 Grey Iron | |
| GLAND | ASTM A48, Class 35 Grey Iron | |
| FLANGE CONNECTION | 4" ANSI 125 lb (Simplex and Duplex Pumps) 6" ANSI 150 lb (Triplex and Quadruplex Pumps) | |
| SAMPLING DRAIN VALVE | 2" Brass Ball Valve on Discharge | 2" Brass Ball Valve on Suction 1" Capped Hose Valve on Suction |
| AIR CHAMBER | A53 Seamless Steel Pipe, Anodized/Galvanized with 1/4" brass air release valve/petcock | 304 or 316 Stainless Steel |
| PACKING | 1/2" sq. Graphite Impregnated Braided with Poly-urethane seal | a) Graphite Rings Only, b) Chevron Rings Only, c) Combo (Graphite/Chevron), d) Plunger Pac (Chevron, Teflon and Poly-urethane seal) |
| PUMP BASE | Fabricated heavy-duty steel channel and tube base plate and pedestals with drip gutters and 1" drain connections | |
| DRIVE ARRANGEMENT | Constant Speed, Helical horizontal Gearmotor coupled to pump's mainshaft, Max. Output Speed: 50 RPM | a) Constant Speed, Helical Shaft-Mounted vertical Gearmotor (vertical), b) V-Belt/Gear/Pulley System, c) Mechanical Variable Speed Drives, d) Variable Frequency Drives, e) Others – Contact Wastecorp |
| DRIVE COUPLING | Flexible Grid-Type | a) Disc Coupling, b) Elastomer Coupling, c) Others – Contact Wastecorp |

SLUDGE MASTER®
EXTREME DUTY PLUNGER PUMPS
EHPE SERIES™



The pump depictions are not meant to be used or relied upon as a substitute for the safety and use information that is published in the respective operator's manual. Before operating your plunger pump, read, understand and follow all instructions in the manual and on the pump. Specifications and programs are subject to change without notice. Images may not reflect dealer inventory and/or unit specifications. Wastecorp, PE Series, HPE Series Space Saver, Sludge Master and globes are trademarks of Wastecorp, WPCI Environmental Brands. No reproduction of this document without permission. © Wastecorp.



Wastecorp Pumps USA
P.O. Box 70
Grand Island, New York 14072 | USA
Tel: 888.829.2783 | Fax: 888-883-3320
sales@wastecorp.com

Wastecorp Pumps Inc.
50 Shorncliffe Road
Toronto, Ontario M8Z 5K1 | Canada
Tel: 416.233.3000 | Fax: 416.233.2300
info@wastecorp.com