



WASTECORP.
Pumps®

SLUDGE MASTER®
HEAVY DUTY PLUNGER PUMPS
PE SERIES

PUMP MODELS

PE 941 Simplex

PE 942 Duplex

PE 943 Triplex

PE 944 Quadruplex

FEATURES

TRANSFER UP TO 335
GPM

160,000 PSI STRENGTH
SHAFTS

SPHERICAL SOLIDS:
1 ¾" (44.45 MM)

MAX PERCENT SOLIDS
@ 68F (20c) ambient temperature:

Industrial Sludge/Slurry: 30%
Dry Weight

Municipal Sludge/Slurry: 15%
Dry Weight

Sand/Clay mix suspended: 70%

Viscosity: 100,000 Centipoise

Specific Gravity: 2.2 to 2.4

SUCTION LIFTS:
Dry Prime: 22" Hg (25 feet)

AIR HANDLING:
All others – 25 cu. ft./min at
max pressure of 30 psi.

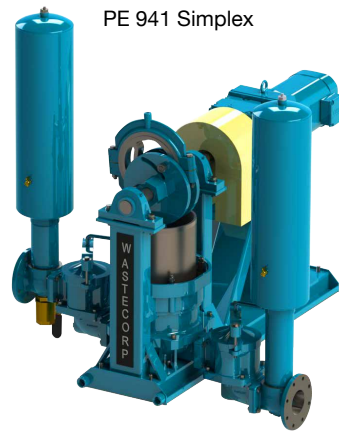
REPLACEABLE BRONZE
INSERT

LOWER COST PARTS

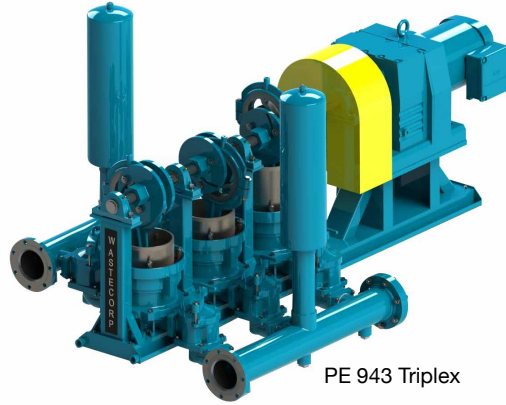
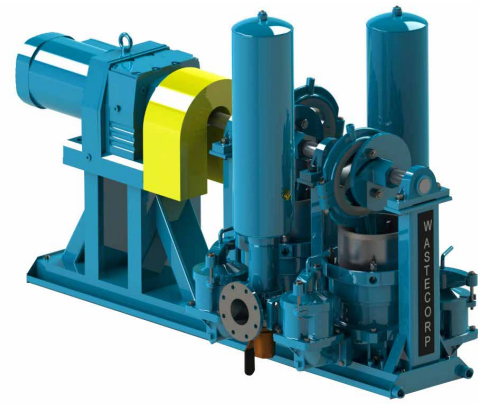
LEAK RESISTANT DESIGN

WASTECORP.COM

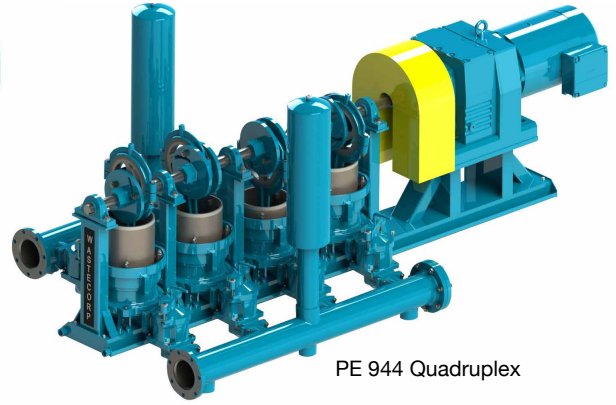
PE 941 Simplex



PE 942 Duplex



PE 943 Triplex



PE 944 Quadruplex

YOUR SLUDGE PROCESSING SOLUTION

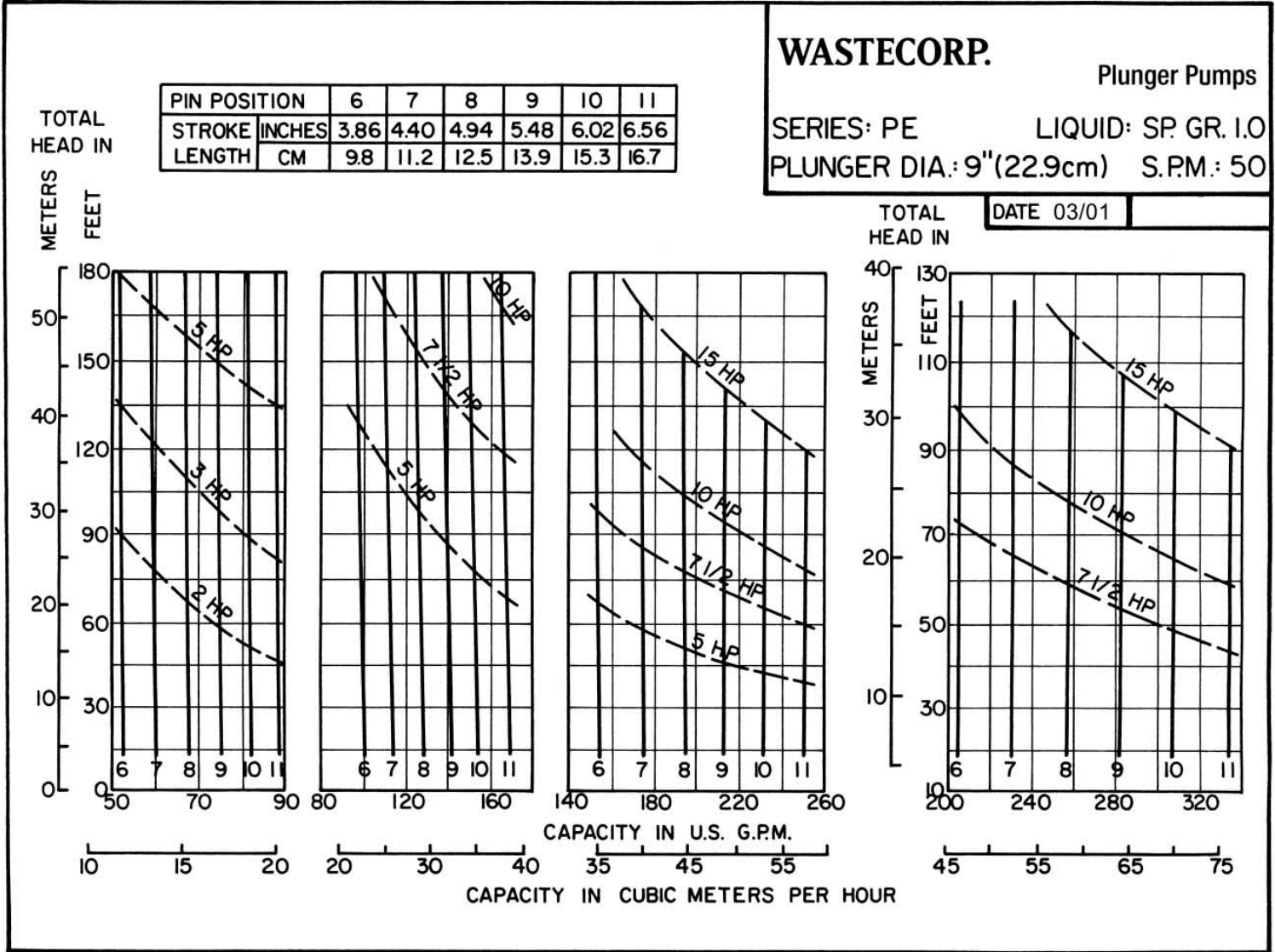
Primary sewage pumping can be a tough task at wastewater treatment plants. But facilities that use Wastecorp Plunger pumps know that it doesn't have to be a headache. Wastecorp's PE-9 Series plunger pumps are available in simplex through quadruplex pump styles. These pumps are capable of capacities up to 335 GPM against head levels up to 180 feet on a continuous duty basis.

These plunger pumps are an ideal replacement for rotary lobe double disc pumps and progressive cavity pumps because the piping arrangements are similar and the plunger pump requires less maintenance.

General Specifications	Simplex PE 941	Duplex PE 942	Triplex PE 943	Quadruplex PE 944
Number of plungers	1	2	3	4
Plunger dia. (in)	9	9	9	9
Air chambers	(1) 9"x30"	(2) 9"x30"	(3) 9"x30"	(4) 9"x30"
Flanged connections	4" ANSI 125 #	4" ANSI 125 #	6" ANSI 150 #	6" ANSI 150 #
Number of pin positions	11			
RPM Speeds	50			
Max. stroke length (in)	6.56			
Max. rec. suction lift (ft)	20			
Max. total head (ft)	180	180	180	125
Max. capacity (GPM)	88	170	252	335
Eccentric dia. (in)	10			
Shaft tensile strength (PSI)	160,000			
Approx. weight less driver (lbs)	1200	1900	2650	3400

Pump Component	Standard Material	Optional Material
MAINSHAFT	A4140/4142 High-Strength Alloy Steel	
ECCENTRIC	ASTM A48, Class 35 Grey Iron	
LUBRICATION	Manual Sight Feed Oiler, 5 oz	a) Automatic ball-type oiler with needle valve (5 oz), b) Electric Solenoid Oiler, c) Mechanical Force Feed Lubricator
DRIVEN/DRIVE FLANGES	ASTM A48, Class 35 Grey Iron	
AIR CHAMBER	A53 Seamless Steel Pipe, Anodized/Galvanized with ¼" brass air release valve/petcock	304 or 316 Stainless Steel
SHEAR PIN	Fabricated Cold Rolled Steel	
CONNECTING ROD	ASTM A536 Grade 65-45-12 Ductile Iron	
ECCENTRIC BEARING LINER	Replaceable, Bronze SAE 660	
BUSHING, WRIST PIN	SAE 941 Oil-Lite Bronze	
WRIST PIN	A4140/4142 High-Strength Alloy Steel	
VALVE SEAT	ASTM A48, Class 35 Grey Iron	Bronze Alloy, 316 Stainless Steel
BALL VALVE	5-1/8" Urethane Rubber with Centralized Iron Core	
PUMP BODY	ASTM A536 Grade 65-45-12 Ductile Iron	
PLUNGER	ASTM A536 Grade 65-45-12 Ductile Iron	Coatings Available: a) Chrome Oxide, b) Aluminum Oxide, c) Tungsten Carbide, d) Hastelloy C, e) Stainless Steel
STUFFING BOX	ASTM A536 Grade 65-45-12 Ductile Iron	
GLAND	ASTM A48, Class 35 Grey Iron	
FLANGE CONNECTION	4" ANSI 125 lb (Simplex and Duplex Pumps)	
PACKING	½" sq. Kevlar Braided with Poly-urethane seal	a) Graphite Rings Only, b) Chevron Rings Only, c) Combo (Graphite/Chevron), d) Plunger Pac (Chevron, Teflon and Poly-urethane seal)
PUMP BASE	Fabricated heavy-duty steel channel and tube base plate and pedestals with drip gutters and 1" drain connections	Floor Base Frame
DRIVE ARRANGEMENT	Electric Constant Speed, Vertical Gear Reducer coupled to pump's mainshaft, Max. Output Speed: 50 RPM	

PERFORMANCE CURVES



PE 941 Simplex

PE 942 Duplex

PE 943 Triplex

PE 944 Quadruplex

SLUDGE MASTER®

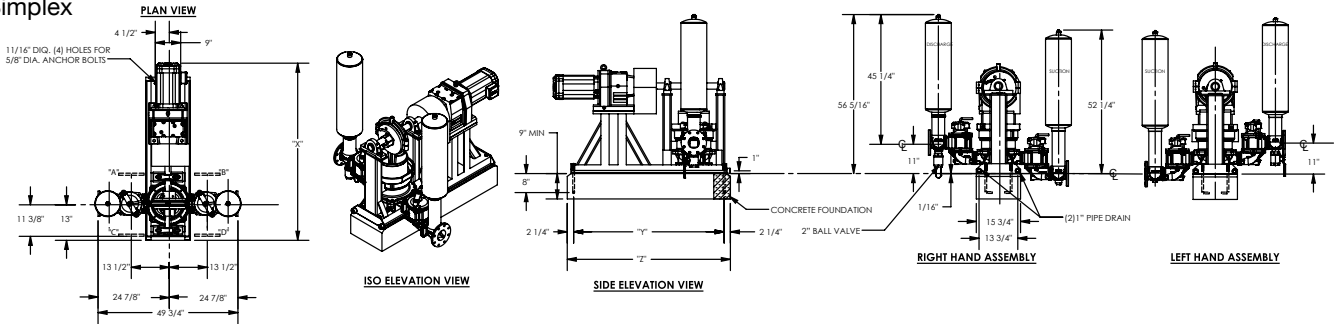
HEAVY DUTY PLUNGER PUMPS

PE SERIES

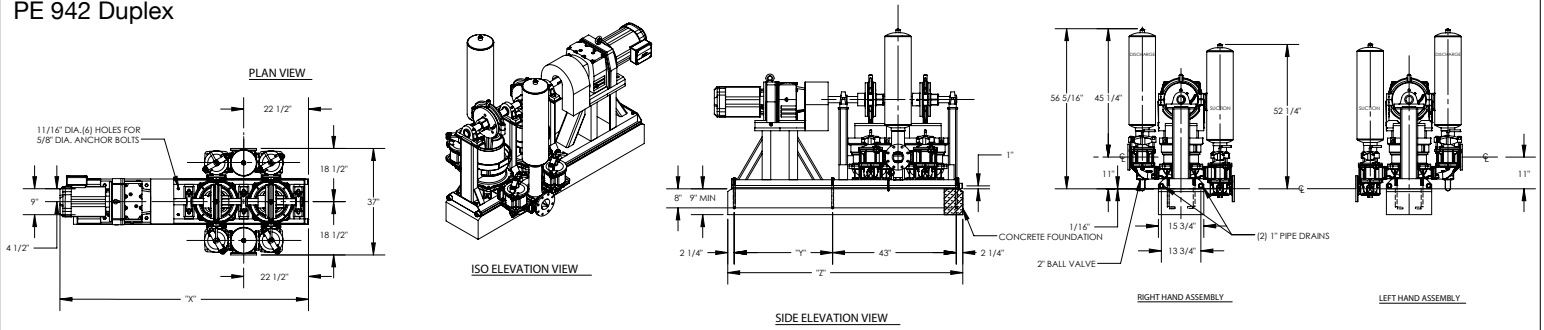


DIMENSIONAL DRAWINGS

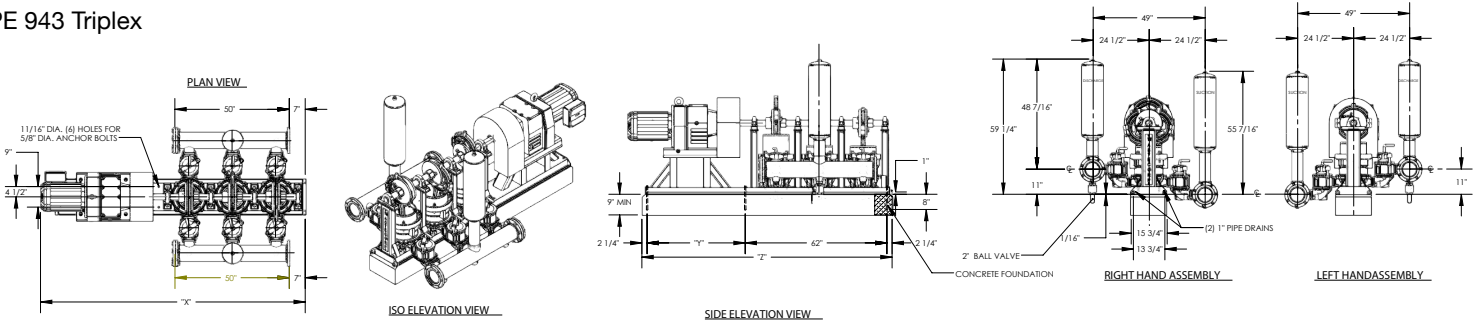
PE 941 Simplex



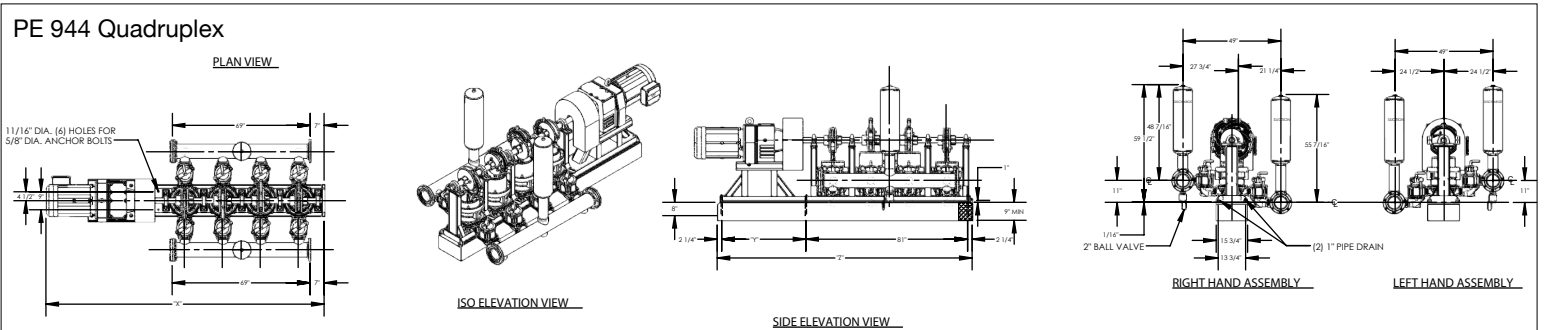
PE 942 Duplex



PE 943 Triplex



PE 944 Quadruplex



Wastecorp Pumps USA
 P.O. Box 70
 Grand Island, New York 14072 | USA
 Tel: 888.829.2783 | Fax: 888-883-3320
 sales@wastecorp.com

Wastecorp Pumps Inc.
 50 Shorncliffe Road
 Toronto, Ontario M8Z 5K1 | Canada
 Tel: 416.233.3000 | Fax: 416.233.2300
 info@wastecorp.com