

TRASH FLOW®
SELF PRIMING TRASH PUMPS
TFCC-10™



HEAVY DUTY PUMP INNOVATION IS ALWAYS SMART.

What's smarter than full impeller access and an easily removable rotating assembly? Having all that pump backed by premium castings and up to 3500 GPM capabilities with up to 135 ft. of head. The TFCC -10, 10" connection is a heavy duty trash pump with innovative components like double floating mechanical seals and solids handling impellers for higher volume wastewater transfer.

FEATURES

TRANSFER UP TO 3500 GPM (795 m³)

MAX. HEAD 135 FT (41 m)

PUMP UP TO 3" (76.2 mm) SOLIDS

QUICK SELF PRIMING CAPABILITIES

HEAVY DUTY BEARINGS AND CASTINGS

EASILY REMOVABLE ROTATING ASSEMBLY

FULL IMPELLER ACCESS

SOLIDS HANDLING IMPELLER

DOUBLE FLOATING MECHANICAL SEAL

DUAL LIP SEAL BEARING PROTECTION*

*optional

TRASH FLOW® CONFIGURATIONS

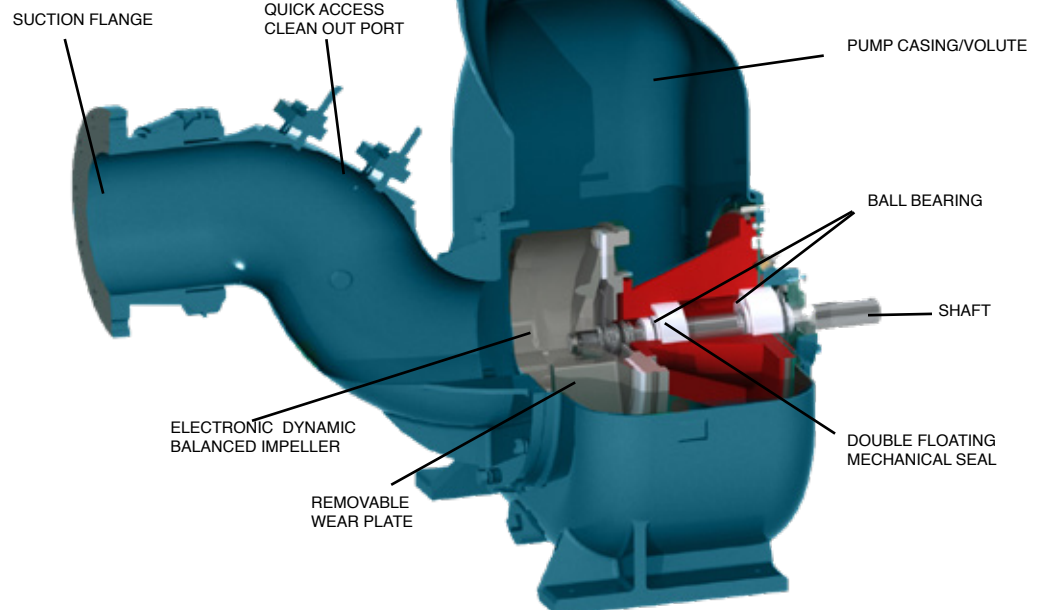
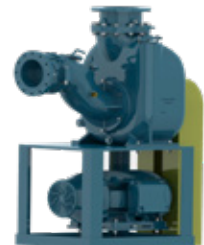
FLEX COUPLED



BELT DRIVE VERTICAL



BELT DRIVE PIGGY BACK



TRASH FLOW®

SELF PRIMING TRASH PUMPS

TFCC-10™



FEATURES



REMOVABLE ROTATING ASSEMBLY
Experience less downtime and maintenance hassles with the Trash Flow's removable rotating assembly. The pump volute and piping are not disturbed during maintenance.



DOUBLE FLOATING MECHANICAL SEAL
Wastecorp's mechanical seals are designed for the harsh pumping conditions in today's municipal and industrial solids handling jobs.



SOLIDS HANDLING IMPELLERS
Trash Flow pumps feature our standard premium two-vane solids handling impellers with solids handling capabilities up to 3" (75mm).



OPTIONAL SUCTION AND DISCHARGE GAUGES
Monitor operating pressure easily with Wastecorp's optional suction and discharge gauges.

OPTIONAL CONFIGURATIONS



SEWAGE LIFT STATIONS
Let our pump designers engineer the ultimate lift station for your facility. We offer complete packaged solutions including control panels, valves and more.



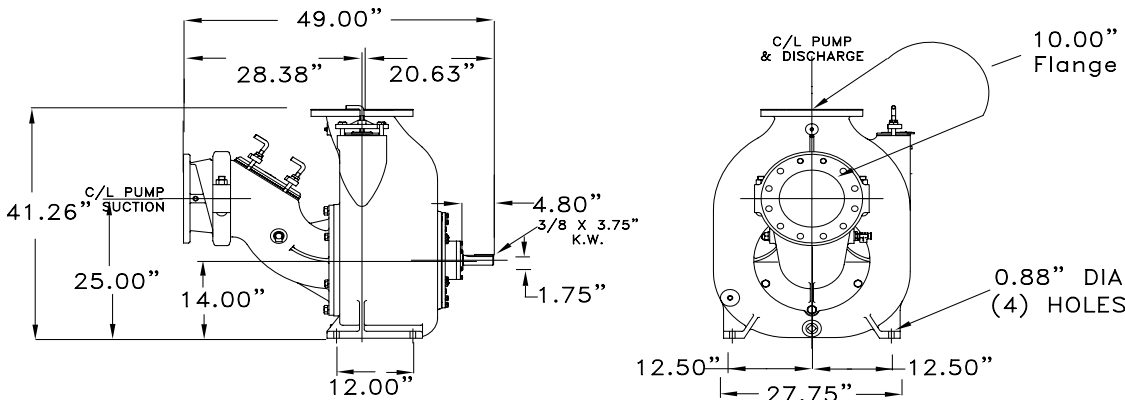
TRAILER OR SKID MOUNT ENGINE
With our trailer or skid mounted diesel engine trash pumps, you'll get a DOT approved solutions for mobile wastewater transfer

Pump Size	10" x 10" [250 mm x 250 mm] ANSI/DIN
Pump Casing	Cast Iron Class 30
Operating Pressure	Maximum 99 psi (683 kPa)
Impeller	Open type, two vane. Material: Ductile Iron Pumps 3" (76,2 mm) spherical solids
Impeller Shaft	ANSI 4140 HT
Wear Plate, Replaceable	Hardened Steel
Cover Plate	Removable/Adjustable Cast Iron Class 30
Flapper Valve	Neoprene with steel reinforcing ring
Bearing Housing	Cast Iron
Seal Plate	Cast Iron
Shaft Sleeve	ANSI 17-4PH SST
Radial Bearing	Open single ball
Thrust Bearing	Open double ball
Bearing/Seal Cavity Lubrication	SAE No. 30 oil
Flanges	125# Ductile Iron ANSI or DIN
Gaskets	Buna-N, compressed synthetic fibers, vegetable fiber, PTFE, cork, and rubber
O-Rings	Buna-N Teflon coated
Hardware	Plated steel/grade 8/SST
Pressure Release Valve	Brass
Oil Level Sight Gauges	Bearing and Seal Cavity
Net Weight	1600 lbs/726 KG
Optional Equipment and Materials:	Stainless Steel. Automatic air release valve, 120V/240V casing heater. High pump temperature shutdown kit, moisture probe, gauge kit, NPT & DIN standard suction and discharge flanges. Other elastomers available.

Seal Specifications: Mechanical oil-lubricated, double floating, self-aligning seal. Titanium & Tungsten Carbide rotating and stationary faces. Stainless steel metal components. Maximum temperature of liquid pumped 180°F/83°C.

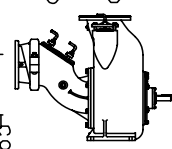
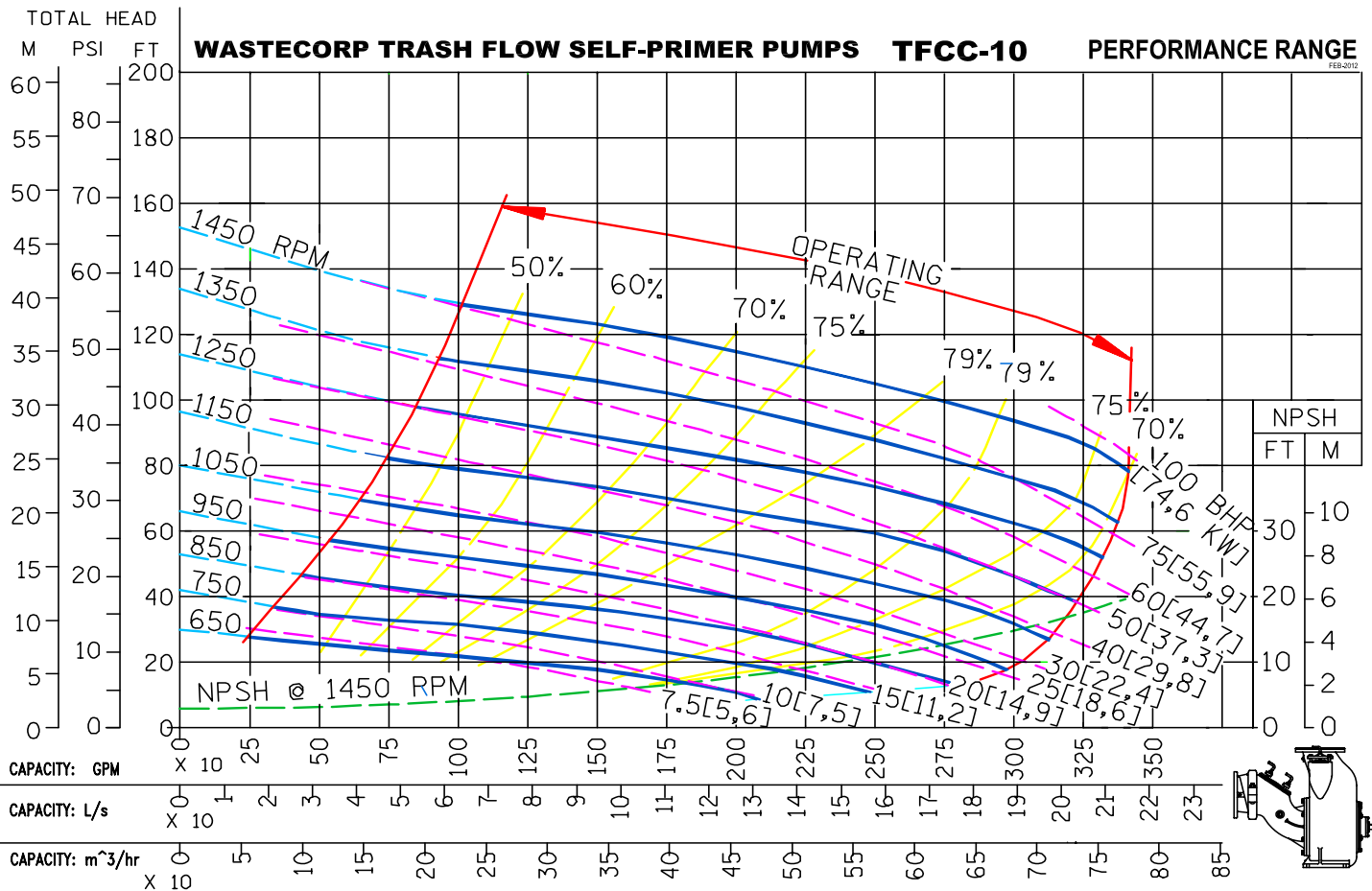
Note: Consult factory for applications exceeding maximum pressure and/or temperature indicated.

BARE PUMP DIMENSIONS



Dimensions and weight are approximate. Wastecorp Pumps reserves the right to make changes in design, materials and operating ranges without notice.

TRASH FLOW[®] SELF PRIMING TRASH PUMPS TFCC-10[™]



REPRIMING LIFTS			
PUMP SPEED	7 FL.	PUMP SPEED	19 FL.
650 RPM	7 FL.	1250 RPM	19 FL.
750 RPM	11 FL.	1350 RPM	22 FL.
850 RPM	14 FL.	1450 RPM	22 FL.
950 RPM	17 FL.		
1050 RPM	18 FL.		
1150 RPM	18 FL.		

CURVE NO.: 62923-00 **MODEL:** TFCC-10
SIZE: 10" x 10" **IMPELLER DIA.:** 14.75"
RPM: VARIOUS **SP. GR.:** 1.0 @ 68°F

Determine NPSHr prior to using repriming table. Do not use as available suction lifts.

$$BHP = \frac{GPM \times FT \times SG}{3960 \times Efficiency}$$

$$KW = \frac{M^3 / HR \times M \times SG}{367 \times Efficiency}$$

Suction lift is limited by the available NPSH which is the corrected atmospheric pressure minus the dynamic suction lift, vapor pressure loss and 2 foot safety factor.

Factory certified tests are performed using Hydraulic Institute acceptance Level B.
 The performance curve shown were taken from actual tests of standard production pumps, and reflect an average performance of the pumps indicated.
 Wastecorp reserves the right to make changes in design, materials and operating ranges without notice.

CONSULT FACTORY FOR OPERATING CURVES 1450 RPM AND ABOVE.



Wastecorp Pumps USA
 P.O. Box 70
 Grand Island, New York 14072 | USA
 Tel: 888.829.2783 | Fax: 888.883.3320
 sales@wastecorp.com

Wastecorp Pumps Canada Inc.
 50 Shorncliffe Road
 Toronto, Ontario M8Z-5K1 | Canada
 Tel: 416.233.3000 | Fax: 416.233.2300
 info@wastecorp.com

Wastecorp Pumps International
 P.O. Box 70
 Grand Island, New York 14072 | USA
 Tel: 201.445.2882 | Fax: 201.445.3252
 info@wastecorp.com

