

3" x 3"



**WASTECORP**  
Pumps®

**TRASH FLOW®**  
SELF PRIMING TRASH PUMPS  
**TFCC-3™**



**FEATURES**

TRANSFER UP TO  
460 GPM (104M³)

MAX. HEAD 115 FT. (35M)

HEAVY DUTY BEARINGS  
AND CASTINGS

EASILY REMOVABLE  
ROTATING ASSEMBLY

FULL IMPELLER ACCESS

SOLIDS HANDLING  
IMPELLER

QUICK SELF PRIMING  
CAPABILITIES

DOUBLE FLOATING  
MECHANICAL SEAL

DUAL LIP SEAL BEARING  
PROTECTION\*

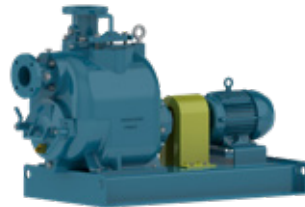
\*optional

**THE POWER AND DURABILITY OTHER 3" SELF PRIMER'S WISH THEY HAD.**

The Trash Flow TFCC-3 Series is an ideal 3" replacement for most brands of self priming centrifugal trash pumps. With fluid handling capabilities up to 460 GPM and max head up to 115 ft you'll get a heavy duty trash pump for heavy duty wastewater transfer.

**TRASH FLOW® CONFIGURATIONS**

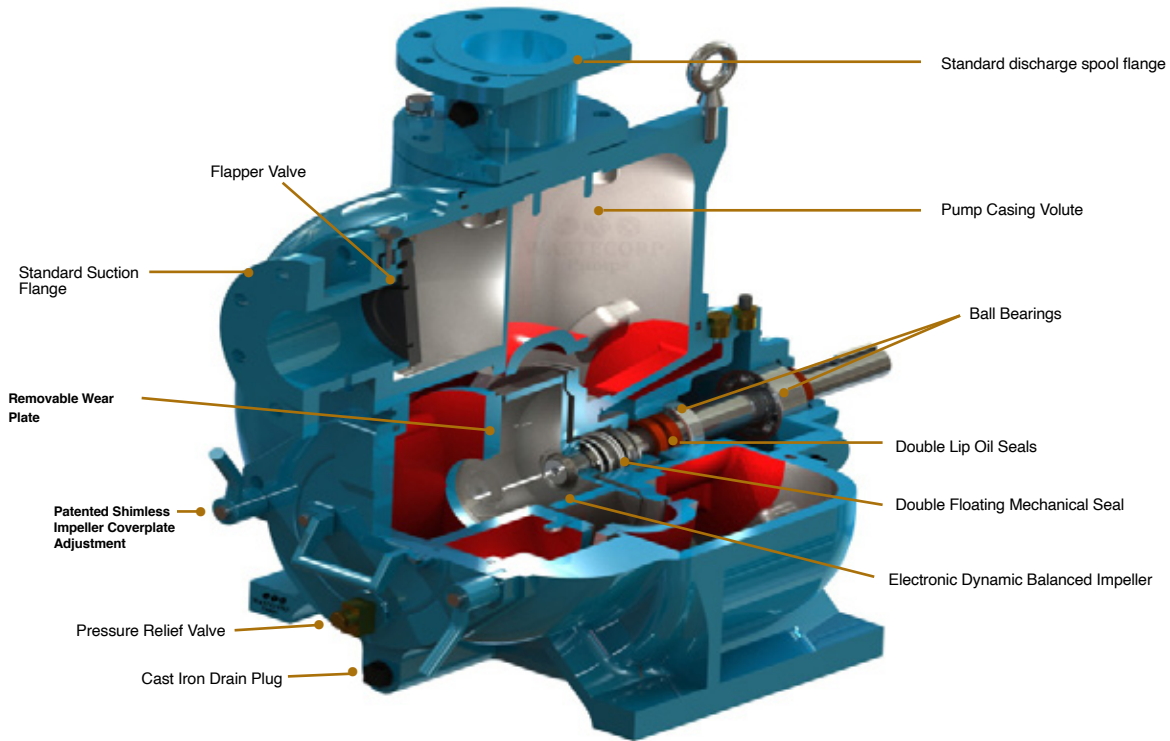
**FLEX COUPLED**



**BELT DRIVE VERTICAL**



**BELT DRIVE PIGGY BACK**



**WASTECORP.COM**

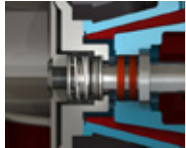
**TRASH FLOW®**  
SELF PRIMING TRASH PUMPS  
**TFCC-3™**  
3"x3"



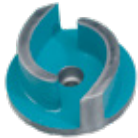
**FEATURES**



**REMOVABLE ROTATING ASSEMBLY**  
Experience less downtime and maintenance hassles with the Trash Flow's removable rotating assembly. The pump volute and piping are not disturbed during maintenance.



**DOUBLE FLOATING MECHANICAL SEAL**  
Wastecorp's mechanical seals are designed for the harsh pumping conditions in today's municipal and industrial solids handling jobs.



**SOLIDS HANDLING IMPELLERS**  
Trash Flow pumps feature our standard premium two-vane solids handling impellers with solids handling capabilities up to 3" (75mm).



**OPTIONAL SUCTION AND DISCHARGE GAUGES**  
Monitor operating pressure easily with Wastecorp's optional suction and discharge gauges.

**OPTIONAL CONFIGURATIONS**



**SEWAGE LIFT STATIONS**  
Let our pump designers engineer the ultimate lift station for your facility. We offer complete packaged solutions including control panels, valves and more.



**TRAILER OR SKID MOUNT ENGINE**  
With our trailer or skid mounted diesel engine trash pumps, you'll get a DOT approved solutions for mobile wastewater transfer

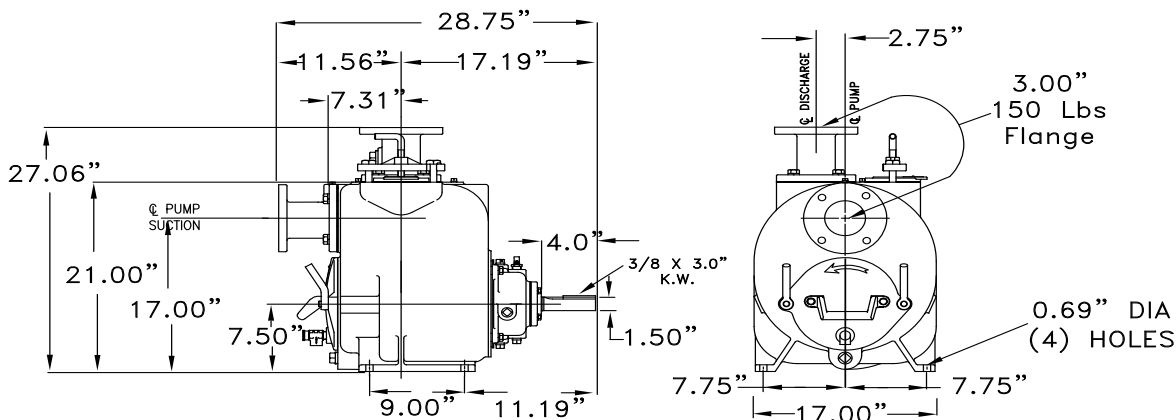
<b>Pump Size</b>	3" x 3" [80 mm x 80 mm] ANSI/DIN
<b>Pump Casing</b>	Cast Iron Class 30
<b>Operating Pressure</b>	Maximum 86 psi (593 kPa)
<b>Impeller</b>	Open type, two vane. Material: Ductile Iron Pumps 2.5" (63.5mm) spherical solids
<b>Impeller Shaft</b>	ANSI 4140 HT
<b>Wear Plate, Replaceable</b>	Hardened Steel
<b>Cover Plate</b>	Removable/Adjustable Cast Iron Class 30
<b>Flapper Valve</b>	Neoprene with steel reinforcing ring
<b>Bearing Housing</b>	Cast Iron
<b>Seal Plate</b>	Cast Iron
<b>Shaft Sleeve</b>	ANSI 17-4PH SST
<b>Radial Bearing</b>	Open single ball
<b>Thrust Bearing</b>	Open double ball
<b>Bearing/Seal Cavity Lubrication</b>	SAE No. 30 oil
<b>Flanges</b>	125# Ductile Iron ANSI or DIN
<b>Gaskets</b>	Buna-N, compressed synthetic fibers, vegetable fiber, PTFE, cork, and rubber
<b>O-Rings</b>	Buna-N Teflon coated
<b>Hardware</b>	Plated steel/grade 8/SST
<b>Pressure Release Valve</b>	Brass
<b>Oil Level Sight Gauges</b>	Bearing and Seal Cavity
<b>Net Weight</b>	490 lbs./222 KG

**Optional Equipment and Materials:** Stainless Steel. Automatic air release valve, 120V/240V casing heater. High pump temperature shutdown kit, moisture probe, gauge kit, NPT & DIN standard suction and discharge flanges. Other elastomers available.

**Seal Specifications:** Mechanical oil-lubricated, double floating, self-aligning seal. Titanium & Tungsten Carbide rotating and stationary faces. Stainless steel metal components. Maximum temperature of liquid pumped 180°F/83°C.

Note: Consult factory for applications exceeding maximum pressure and/or temperature indicated.

**BARE PUMP DIMENSIONS**



Dimensions and weight are approximate. Wastecorp Pumps reserves the right to make changes in design, materials and operating ranges without notice.

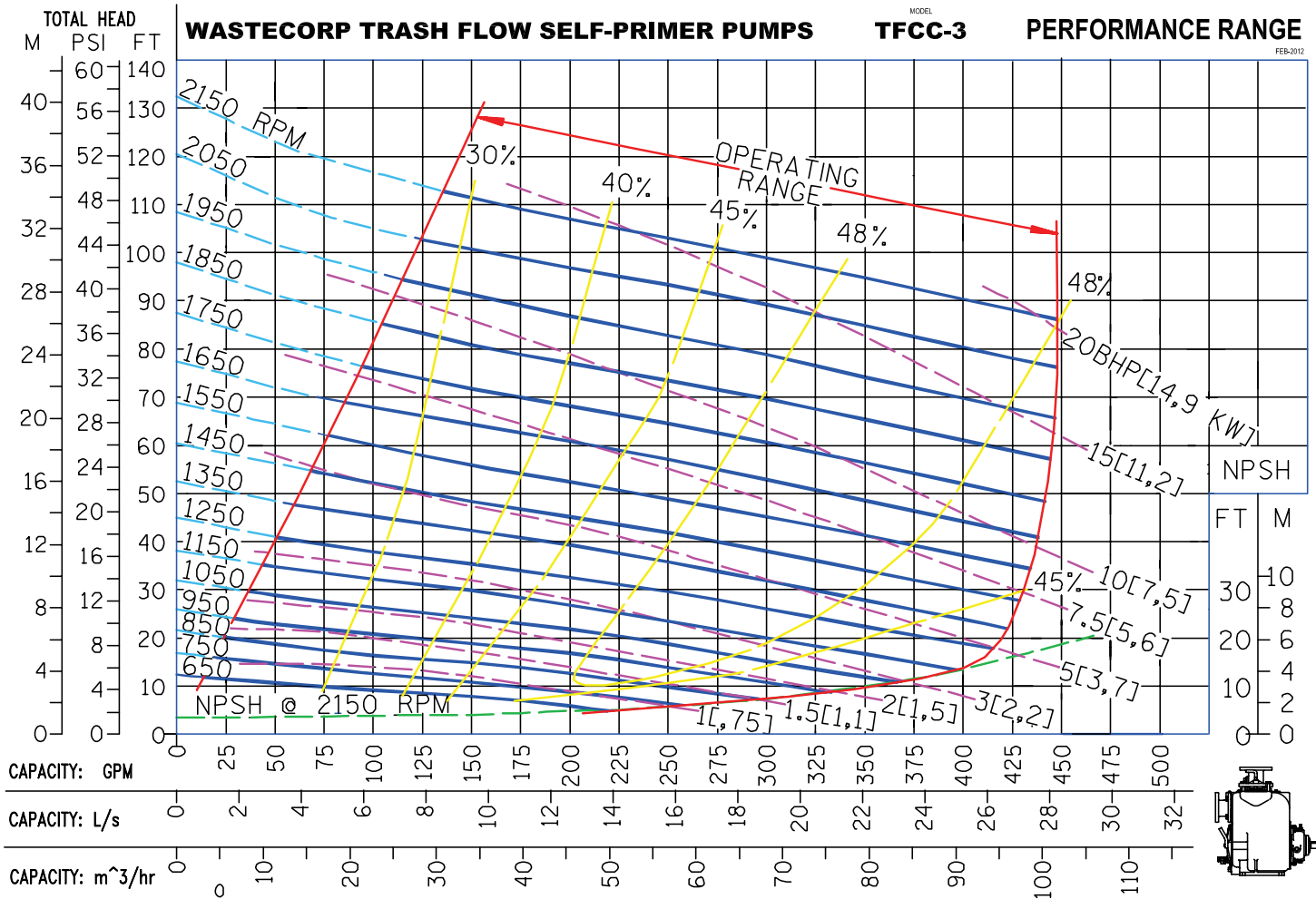
**TRASH FLOW®**  
SELF PRIMING TRASH PUMPS

**TFCC-3™**

3"x3"



**WASTECORP.**  
**Pumps®**



**REPRIMING LIFTS**

PUMP SPEED	5 FT.	1250 RPM	18 FT.	1850 RPM	25 FT.
650 RPM	5 FT.	1250 RPM	18 FT.	1850 RPM	25 FT.
750 RPM	6 FT.	1350 RPM	19 FT.	1950 RPM	25 FT.
850 RPM	8 FT.	1450 RPM	20 FT.	2050 RPM	25 FT.
950 RPM	10 FT.	1550 RPM	21 FT.	2150 RPM	25 FT.
1050 RPM	13 FT.	1650 RPM	22 FT.		
1150 RPM	16 FT.	1750 RPM	22 FT.		

Determine NPSH prior to using repriming table. Do not use as available suction lifts.

$$BHP = \frac{GPM \times FT \times SG}{3960 \times Efficiency} \quad KW = \frac{M^3 / HR \times M \times SG}{367 \times Efficiency}$$

Suction lift is limited by the available NPSH which is the corrected atmospheric pressure minus the dynamic suction lift, vapor pressure loss and 2 foot safety factor.

CURVE NO.: 62920-00 MODEL: TFCC-3  
 SIZE: 3" x 3" IMPELLER DIA: 8.75"  
 RPM: VARIOUS SP. GR.: 1.0 @ 68°F

Factory certified tests are performed using Hydraulic Institute acceptance Level B. The performance curve shown were taken from actual tests of standard production pumps, and reflect an average performance of the pumps indicated. Wastecorp reserves the right to make changes in design, materials and operating ranges without notice.



Wastecorp Pumps USA  
 P.O. Box 70  
 Grand Island, New York 14072 | USA  
 Tel: 888.829.2783 | Fax: 888.883.3320  
 sales@wastecorp.com

Wastecorp Pumps Canada Inc.  
 50 Shorncliffe Road  
 Toronto, Ontario M8Z-5K1 | Canada  
 Tel: 416.233.3000 | Fax: 416.233.2300  
 info@wastecorp.com

Wastecorp Pumps International  
 P.O. Box 70  
 Grand Island, New York 14072 | USA  
 Tel: 201.445.2882 | Fax: 201.445.3252  
 info@wastecorp.com