

TRASH HOG®
SOLIDS HANDLING PUMP
TFX-4TH

FEATURES

TRANSFER UP TO
541 GPM

MAX. HEAD 98 FT.

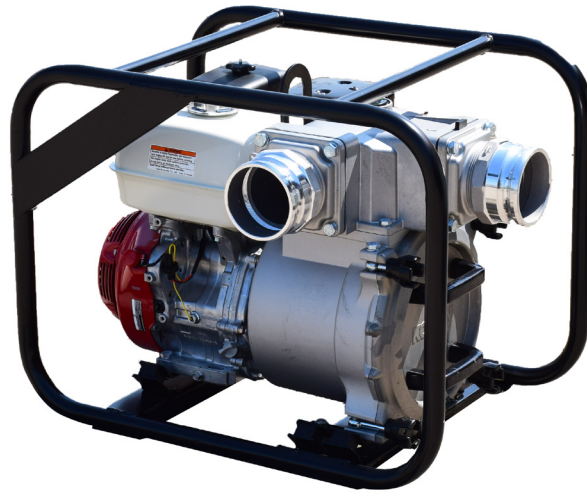
HEAVY DUTY BEARINGS
AND CASTINGS

2" SOLIDS HANDLING

DURABLE & LIGHT
DESIGN

OPTIONAL WHEEL
MOUNT ACCESSORY
AVAILABLE*

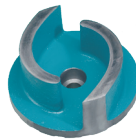
*optional



THE TFX-4TH. THE TOUGH AND COMPACT SOLIDS HANDLING TRASH PUMP.

The TFX-4TH is a rigid, compact and portable solids handling trash pump. With its durable frame and light weight you can take this utility pump right into the work area. The TFX-4TH can pump water and solids up to 2" solids and 541 GPM with up to 98 ft. of discharge head. With the optional wheel mount kit this pump is perfect for on the move operations.

FEATURES



SOLIDS HANDLING IMPELLERS

Trash Flow pumps feature our standard premium two-vane solids handling impellers with solids handling capabilities up to 2".



TFX TRASH PUMP WHEEL KIT

The optional wheel kit accessory is designed to fit your choice of TFX trash pump and provides even more portability.

PUMP SPECIFICATIONS

Model	TRASH HOG® TFX-4TH	PN: 62683-10
Connection Diameter	4" NPT	
Max Flow Rate	541 GPM	
Max Discharge Head	98 Ft.	
Max Suction Lift	26 Ft.	
Max Spherical Solids	2"	
Dimensions	30"x 24"x25"	
Weight	200 Lbs	

ENGINE SPECIFICATIONS

Engine Model	GX390
Horse Power	11.7
Fuel Tank Capacity	1.6 Gal
Continuous Run Time	1.5 Hours
Starting	Recoil
Standard Accessories	1 strainer, 1 Spanner, 1 Engine Tool Set Optional electric start and diesel engine

PUMP PACKAGE



GET THE COMPLETE PACKAGE

In addition to the wheel kit Wastecorp also offers a wide range of accessories so you can get the job done right and make the most of your pump purchase.

HOSE, NON-COLLAPSIBLE EPDM (GRN/BLK), 4" X 20' c/w C&KC	60728-00
HOSE, DISCHARGE LAYFLAT (BROWN), 4" x 50 ft c/w C&E	51335-10
STRAINER, SQ HOLE (SOLIDS) 4" FNPT	31760-00
STRAINER, RD HOLE (NON-CLOG) 4" FNPT	60580-00