



## MUNICIPAL PUMP BROCHURE

Portable and stationary pump systems for municipal water and wastewater applications



PUMPS DESIGNED FOR ONE APPLICATION. YOURS.

## Demonstrated Engineering Excellence in Municipal Pump Manufacturing

Over 30 years ago, Wastecorp set out with a goal to improve the quality of severe duty pumps and customer support available to municipalities pumping raw sewage, slurry, wastewater, storm water and primary sludge.

Today, Wastecorp offers hundreds of pump models both portable and stationary to meet the modern realities of public sanitation systems. Solids, wet wipes and the emergence of fatbergs in public sewage systems pose unique challenges to public utility agencies globally. Wastecorp invests in technology and pumping equipment that can help your agency plan ahead.

When you select Wastecorp Pumps you get a committed team of pump manufacturing professionals who are dedicated to providing solutions to your pumping challenges. Parts and service are always available from our factory with the added benefit of a pump manufacturing company dedicated to providing easy-to-use and service pumping equipment.







# WASTECORP MUNICIPAL PUMP PRODUCTS

## Municipal Pump Applications

- Belt filter press feed pumps
- Centrifuge pumps
- Digester recirculation pumps
- Effluent pumps
- Equalization pumps
- Grit pumps
- Influent Pumps
- Portable engine driven pumps
- Primary Sludge Pumps
- Return activated Sewage (RAS) Pumps
- Waste activated sewage pumps (WAS)
- Sludge Transfer Pumps
- Utility, non-potable water pumps

## Municipal Pump Products

- Double Disc Pumps
- Plunger pumps
- Self Priming Centrifugal Pumps
- Diaphragm Pumps
- Dry prime pumps
- Lift Stations
- Engine driven portable pumps

## Municipal Pumps

Wastecorp's extensive line of Trash Flow wet prime and dry prime pump products are used for municipal wastewater treatment, flood control and manhole dewatering.

## Raw Sewage Pumps and Slurry Pumps

Wastecorp has a 30 year track record working with municipal sewage treatment plants for primary sludge transfer, solids handling equipment, belt filter press feed pumps, tanker loading and offloading pumps and digester transfer pumps. Check out our line of Sludge Master Plunger Pumps, Mud Sucker Diaphragm Pumps and Sludge Pro low maintenance double disc pumps.


## Lift Stations

Wastecorp above ground and below ground lift stations for sewage pumping are available to replace almost any existing make or model of lift station. We use our exclusive Trash Flow wet prime, self priming centrifugal pumps and integrated control panels. Enclosures are available along with fast lead times to get your lift station in operation.

## Emergency Back-Up Pumps and Bypass Pumping

Wastecorp engine driven bypass pumps are manufactured with our Trash Flow wet prime or dry prime pump products. We use Tier-4 final diesel engines to help protect against sanitary sewer overflows right solution for your pumping needs.





# PUMP QUALITY, CUSTOMER SUPPORT AND WARRANTY

## QUALITY AND CUSTOMER SUPPORT

Your municipality can count on top rated support throughout the life cycle of your Wastecorp municipal pump. As an ISO 9001, ISO 14001 certified pump manufacturer we ensure that our high quality products and standards.

## TRAINING

Wastecorp provides detailed municipal pump training seminars for both new installations and providing guidance to new employees. Both on-site and classroom training is available. Your operators will learn best practices on Wastecorp pump technology and how to enhance productivity.

## SERVICE

Wastecorp specializes in manufacturing municipal pumping equipment that is easy-to-use and maintain. Our factory service technician and local Wastecorp partners can provide services including rebuilds and retrofits to keep your pumps operating at peak performance.

## PARTS

Municipal pump parts are stocked for next day delivery if necessary in most areas.

## PUMP WARRANTY PROGRAM

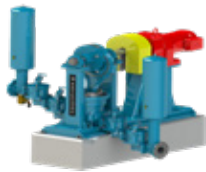
With a track record of over 30 years in the municipal pump manufacturing industry, Wastecorp has always stood behind the public sanitation pump products we manufacture. Wastecorp's limited pump warranty program is among the best warranties in the pump manufacturing business.



# SEVERE DUTY MUNICIPAL SEWAGE AND SLUDGE TRANSFER

## SLUDGE MASTER® PLUNGER PUMPS THE ULTIMATE SEWAGE PUMP.

Wastecorp's PE, HPE, EHPE and Space Saver Series are the workhorses of municipal sewage treatment plants worldwide since 1928. Sludge Master's are known for their ability to pump raw sewage screened sewage whether or not a grinder is present on the suction line.



### SLUDGE MASTER® PE SERIES™

Medium-Heavy Duty Sludge Pumps  
Size: 4"-6" flanged (102-152mm)  
Max Capacity: 495 GPM (31 lps)  
Max Head: 180' (55 m)



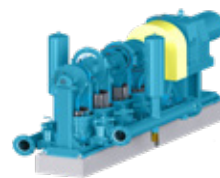
### SLUDGE MASTER® SPACE SAVER™ SERIES

Compact Footprint  
Size: 4"-6" flanged (102-152mm)  
Max Capacity: 371 GPM (23 lps)  
Max Head: 115' (35 m)



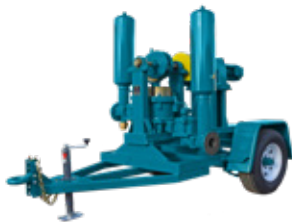
### SLUDGE MASTER® HPE SERIES™

Severe Duty Sludge Pumps  
Size: 4"-6" flanged (102-152mm)  
Max Capacity: 556 GPM (35 lps)  
Max Head: 170' (52 m)



### SLUDGE MASTER® EHPE SERIES™

High Head Applications  
Size: 4"-6" flanged (102-152mm)  
Max Capacity: 600 GPM (38 lps)  
Max Head: 300' (91 m)



### SLUDGE MASTER® HPX SERIES

Mobile Plunger Pumps

Wastecorp Sludge Master HPX Series plunger pumps provide robust pumping capabilities on a trailer or skid mounted configuration. Powered by Tier 4 final diesel engines.



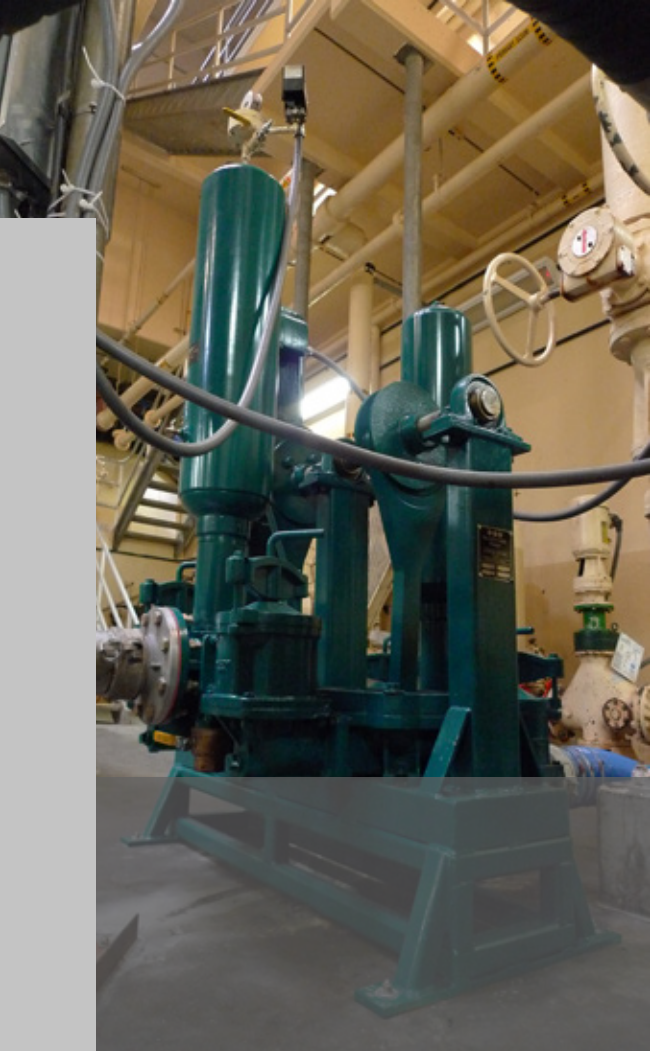
Space Saver Series replacing rotary lobe pumps at a WWTP



HPE Series Belt filter press feed pumps for primary sludge transfer



PE Series WWTP expansion, new digester recirculation pumps



# LOW MAINTENANCE MUNICIPAL SEWAGE PUMPS

Wastecorp's Sludge Pro double disc pump product line provides low maintenance solutions for primary sludge pumping at municipal wastewater treatment facilities. This an advanced design requiring minimal servicing. Ball valve and clack valve models available.

## SLUDGE PRO® DOUBLE DISC PUMPS NEXT GENERATION DOUBLE DISC PUMP TECHNOLOGY.

If lower maintenance pump products are on the mind of your facility, consider Wastecorp's revolutionary line of low maintenance double disc pumps. Designed to directly replace Penn Valley (PVP Pump) and other makes with a more maintenance friendly design.



### SLUDGE PRO® DOUBLE DISC PUMP MK SERIES

Heavy-Severe Duty Sludge Pumps  
Size: 4", 6", 8", 10"  
Max Capacity: 1650 GPM



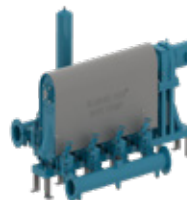
### SLUDGE PRO® TRIPLEX DISC PUMPS

Severe Duty Sludge Pumps  
Size: 6" (150mm)  
Max Capacity: 375 GPM (24 lps)  
Max Head: 184' (56 m)



### SLUDGE PRO® SPACE SAVER DOUBLE DISC PUMPS

Heavy Duty Sludge Pumps  
Size: 3", 4", 6" (76mm, 102mm, 150mm)  
Max Capacity: 250 GPM (35 lps)  
Max Head: 184' (56 m)



### SLUDGE PRO® QUADRUPLEX DISC PUMPS

Severe Duty Sludge Pumps  
Size: 6" (150mm)  
Max Capacity: 502 GPM (221 lps)  
Max Head: 184' (56 m)



### SLUDGE PRO® MOBILE DOUBLE DISC PUMPS

Engine Driven Portable Sewage Pumps  
Size: 3", 4", 6" (76mm, 102mm, 150mm)  
Max Capacity: 371 GPM (23 lps)  
Max Head: 115' (35 m)  
Options: Tier 4 final diesel engines, trailer and skid packages



Select from clack valve  
or ball valve on all models



# HIGH PERFORMANCE DIAPHRAGM PUMPS



Mud Sucker Diaphragm Pumps provide a wide variety of options for pumping wastewater containing grit and solids around your facility. Select from mobile and stationary models with electric, gas, diesel, air or hydraulic power

## MUD SUCKER® DIAPHRAGM PUMPS THE PUMP WITH ATTITUDE.

The Mud Sucker diaphragm pump product line is America's favorite diaphragm pump for moving slurry and solids. Wastecorp manufactures the Mud Sucker with both stationary and portable units available. Trailer mounted, wheels kits and skid mounted models are available.



**MUD SUCKER®  
2FA™ SERIES**  
Standard Duty  
Size: 2" (51 mm)  
Max Capacity: 20 GPM (1.26 lps)  
Max Head: 50' (15 m)



**MUD SUCKER®  
DOUBLE DIAPHRAGM  
PUMPS**  
Higher Capacity Diaphragm Pumps  
Size: 2", 3", 4", 6" (51 mm, 76 mm, 102 mm, 152 mm)  
Max Capacity: 220 GPM (14 lps)  
Max Head: 50' (15 m)



**MUD SUCKER®  
3FAC™ SERIES**  
Heavy Duty Diaphragm Pumps  
Size: 3" (76 mm)  
Max Capacity: 80 GPM (5 lps)  
Max Head: 50' (15 m)



**MUD SUCKER®  
MOBILE SERIES**  
Size: 2", 3", 4", 6" (51 mm, 76 mm, 102 mm, 152 mm)  
Max Capacity: 220 GPM (14 lps)  
Max Head: 50' (15 m)



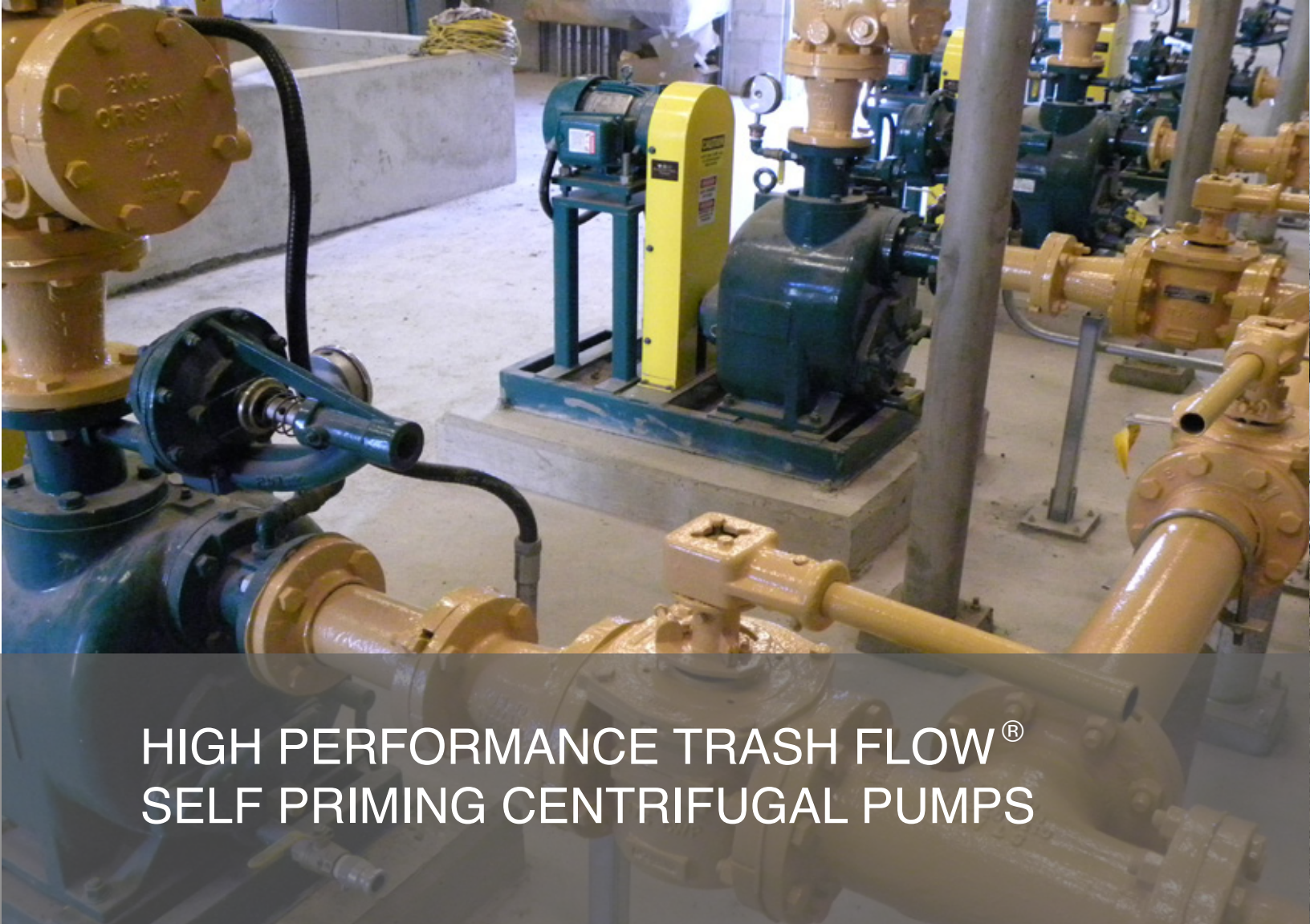
Compact and cost effective



Custom packages available



Designed for solids and slurry pumping



# HIGH PERFORMANCE TRASH FLOW<sup>®</sup> SELF PRIMING CENTRIFUGAL PUMPS

## TRASH FLOW<sup>®</sup> SELF PRIMERS

Wastecorp's Trash Flow product line is available in 2"-12" connection sizes with fluid handling capabilities up to 5500 GPM. Replace many existing makes with no piping changes. Available in stationary, trailer mounted and skid mounted.



### TRASH FLOW<sup>®</sup> TFCC SERIES™ WET PRIME

Size: 2" to 12" (76 mm, 102 mm, 150mm)  
Max Capacity: 127 GPM (8 lps)  
Max Head: 184' (56 m)



### TRASH FLOW<sup>®</sup> TFCC-VP SERIES™ HIGH PRESSURE

Size: 3", 4", 6" (76mm, 102mm, 150mm)  
Max Capacity: 250 GPM (35 lps)  
Max Head: 184' (56 m)



### TRASH FLOW<sup>®</sup> TFCCM SERIES™ ENGINE DRIVEN

Size: 6" (150mm)  
Max Capacity: 375 GPM (24 lps)  
Max Head: 184' (56 m)



### TRASH FLOW<sup>®</sup> HUSHER SERIES™ SILENT PUMP

Size: 6" (150mm)  
Max Capacity: 502 GPM (221 lps)  
Max Head: 184' (56 m)



# HEAVY DUTY DRY PRIME PUMPS FOR BYPASS AND BACK-UP APPLICATIONS. <sup>®</sup>

## TRASH FLOW<sup>®</sup> DRY PRIME

Trash Flow dry prime products provide affordable portable bypass and back up pump systems for municipal public works agencies. Our engine Trash Flow TFV Series and Husher silent models are configurable to almost any specification. All of our pump engines are Tier 4 final compliant and available from Hatz, Deutz, John Deere and CAT.



### TRASH FLOW<sup>®</sup> TFV SERIES™ DRY PRIME

Size: 4", 6", 8", 12" (102 mm, 150 mm, 203 mm, 305 mm)  
Max Capacity: 9500 GPM (600 lps)  
Max Head: 200' (61 m)



### TRASH FLOW<sup>®</sup> HUSHER™ SILENT PUMP

Size: 4", 6", 8", 12" (102 mm, 150 mm, 203 mm, 305 mm)  
Max Capacity: 9500 GPM (600 lps)  
Max Head: 200' (61 m)



### TRASH FLOW<sup>®</sup> TFV-H SERIES™ HIGH HEAD DRY PRIME

Size: 4", 6", 8", 12" (102 mm, 150 mm, 203 mm, 305 mm)  
Max Capacity: 12000 GPM (757 lps)  
Max Head: 720' (219 m)





# MUNICIPAL SEWAGE LIFT STATIONS BUILT TO LAST

## TRASH FLOW<sup>®</sup> MUNICIPAL LIFT STATIONS

Trash Flow municipal lift stations are available in above-ground, below-ground and auto-start configurations. Wastecorp sewage lift stations are built to your specifications complete with control panels and enclosures if required. Our lift stations ship pretested to your job site, ready to go. Engine driven models are designed to operate with diesel or environmentally friendly natural gas.



### TRASH FLOW<sup>®</sup> LIFT STATIONS ABOVE GROUND

Custom above ground lift station with or without enclosure

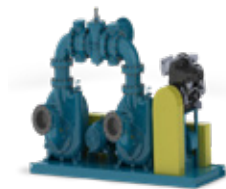
Size: 4", 6", 8", (102 mm, 150 mm, 203 mm)  
 Max Capacity: 9500 GPM (600 lps)  
 Max Head: 200' (61 m)



### TRASH FLOW<sup>®</sup> LIFT STATIONS BELOW GROUND

Heavy duty municipal wastewater pumping capabilities below grade

Size: 4", 6", 8" (102 mm, 150 mm, 203 mm)  
 Max Capacity: 3300 GPM (208 lps)  
 Max Head: 128' (39 m)



### TRASH FLOW<sup>®</sup> LIFT STATIONS AUTO START

Engine Driven Back-up Sewage Pumps

Size: 4", 6", 8", 12" (102 mm, 150 mm, 203 mm, 305 mm)  
 Max Capacity: 12000 GPM (757 lps)  
 Max Head: 720' (219 m)



# TRASH FLOW® STANDARD ABOVE GROUND LIFT STATION FEATURES



## 1-PUMPS

Accommodates Trash Flow® self-priming TFCC Series pumps in duplex and triplex configurations:

Trash Flow Pumps:

Sizes 3" - 8" in duplex arrangements up to 100 HP

Sizes 3" - 4" in triplex pump arrangements

## 2-ENCLOSURE

Manufactured for flexural strength, excellent fatigue and delaminating resistance

## 3- MAINTENANCE ACCESS

## 4-REMOVABLE ROOF

## 5-MAN-DOOR STATION ENTRANCE

## 6- INTERIOR WALL FOR ACCOMMODATING MORE SOPHISTICATED CONTROLS

7- CUSTOM-ENGINEERED, NEMA-RATED AUTOMATIC CONTROLS:  
Includes your choice of adjustable pressure controls, H-O-A selectors, overload reset buttons and circuit breakers for station accessories Available U.L. and C.S.A. listed

## 8- CLEARLY MARKED FIELD CONNECTIONS FOR FAST AND EFFICIENT ELECTRICAL HOOK-UP

## SPECIFICATIONS

Pump Size: 3" (75 mm), 4" (100 mm), 6" (150 mm), 8" (200 mm)

Max. Capacity: 2600 GPM

Max. Solids: 3" (76.2mm)

Max. Head: 320' (97.5 m)

Max. Temperature: 160°F (71°C)

Motor - Voltage: 200V 3p, 230V 1ph, 230V 3 ph, 460V 3 ph

Motor Cycles: 60 Hz

Horsepower: 2 hp - 100 hp

# Municipal Pump Manufacturing

## FOR THE 21ST CENTURY

Wastecorp has manufactured municipal pumping equipment for over 30 years. We are an ISO 9001 and 14001 certified pump manufacturer and adhere to Hydraulic Institute Standards in our processes.

We proudly work with our municipal customers throughout the life cycle of your pump. Parts, rebuilds and retrofits are available and cost effective. Wastecorp also offers factory training, re-training and start up services to enhance your operators' capabilities.

Call Wastecorp today at 1-888-829-2783 in USA or Canada. 1+201-445-2882 international. Visit us at [wastecorp.com](http://wastecorp.com) for more information



North America: 1-888-829-2783

Fax: 1-888-883-3320

Worldwide: +1-201-445-2882

Fax: +1-201-445-3252

E-mail: [info@wastecorp.com](mailto:info@wastecorp.com)

Internet: [www.wastecorp.com](http://www.wastecorp.com)



Specifications, literature and illustrative material are accurate at the time of publication but are subject to change without notice. Illustrations may include optional equipment and accessories and may not include all standard equipment. Super Duty, Wastecorp and globes are trademarks of Wastecorp Pumps Inc .

© 2024 WPI. V1 03/24 Exclusive License to Wastecorp Pumps,LLC. All rights reserved. New York, NY 10024