



Trash Flow® Dry Prime Pumps  
**TFBH 8x6-M™ Series**  
 Automatic Self-Priming  
 Dry Prime Venturi Technology

#### FEATURES

UP TO 5,600 GPM  
 PUMPING CAPABILITIES

MAX. HEAD TOTAL TDH  
 (FT) 600 FT.

UP TO 176° F FLUID  
 TEMPERATURE

MADE AND ASSEMBLED  
 IN THE USA AND/OR  
 CANADA

#### OPTIONAL ACCESSORIES

WASTECORP IS AN ISO  
 9001, 14001 CERTIFIED  
 DRY PRIME PUMP  
 MANUFACTURER

† See pump specifications for solids handling information.



## THE NEW STANDARD FOR DRY PRIME PUMPS MEET TRASH FLOW® TFBH-8x6™ SERIES

Trash Flow Dry Prime pumps are built for emergency bypass and dewatering applications. The unique oil bath technology, ensures that the mechanical seal is always lubricated in its own chamber. This safeguard allows the pump to run dry indefinitely without damage. An enhanced priming system, minimizes effluent discharge into the environment.

PROFESSIONAL DRY PRIME PUMPS - HIGH QUALITY. QUICK DELIVERY.



#### VENTURI AIR EJECTOR PRIMING SYSTEM

Wastecorp's intelligent priming system, uses a Quincy compressor to rapidly evacuate air from the suction line which is exhausted to atmosphere. Liquid replaces the air, automatically priming the pump within seconds. The result is fast, efficient and environmentally friendly pump system.



#### CUSTOMIZE YOUR TRASH FLOW DRY PRIME THE WAY YOU NEED IT.

With Wastecorp, you get a host of options to customize your dry prime pump the way you need it. Select from diesel, electric or natural gas motors, sound attenuated enclosures, trailer or skid mount, float regulator systems and much more. Wastecorp's dry prime specification is designed to meet or exceed any equivalent manufacturer.



#### HUSHER™ SERIES - SOUND ATTENUATED HUT

For pumping in residential areas or where reduced noise is critical, Wastecorp offers the Trash Flow TVP Husher Series. This sound attenuated lockable enclosure reduces noise to 68 dBa @ 7 Meters which complies with most local regulations. A Wastecorp technical support representative can help you select the correct Husher for your application.

## Trash Flow® Dry Prime Pumps

### TFVH 8x6-M™ Series

Automatic Self-Priming  
Dry Prime Venturi Technology



Solids handling impeller

Diesel, electric, or natural gas powered engines available

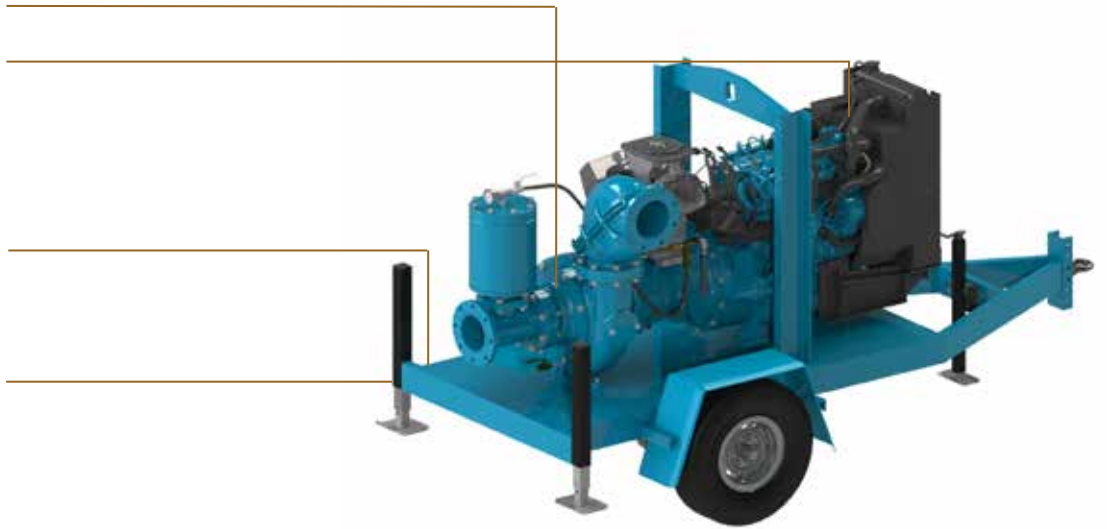
Instrument panel includes oil pressure gauge, amp, hour and tachometer

Standard 80 gallon fuel tank (larger sizes available)

Simple maintenance

Trailer mounted or skid mounted models available

**Also available with Husher silent pumping package for pumping in residential areas.**



Manufactured in the United States and/or Canada. Wastecorp is an ISO 9001, 14001 certified dry prime pump manufacturer.

#### Available Options

- Auto-Start for unattended 24 - hour operation (Lofa 750 Panel)
- Level regulator float system
- Highway Trailer or Skid Mount
- Sound Attenuated Lockable Enclosure (68 dBa @ 7 Meters)
- Diesel engine, electric motor or natural gas drive systems
- **Optional engines and hp available contact factory**



#### Pump Specifications

Suction & discharge connection	8" suction x 6" discharge
Max capacity	5600 GPM †
Max head	600 ft.
Max operating speed	1800 rpm
Solids Handling	3"

#### Engine Specifications

Certification	Final Tier 4 Water Cooled or Interim Air Cooled
Fuel tank	80 gal (larger sizes available)
Instrument panel	Oil pressure gauge, amp, hour and tachometer

#### Materials of Construction

	Standard	Optional
Impeller	CA6NM SS	CD4MCu
Wear ring	Ductile Iron	316 SS
Shaft	17-4 PH	
Casing	Ductile Iron	CD4MCu
Bearing frame	Ductile Iron	CD4MCu
Mechanical seal	High pressure liquid oil bath with high abrasion resistant solid carbon faces.	

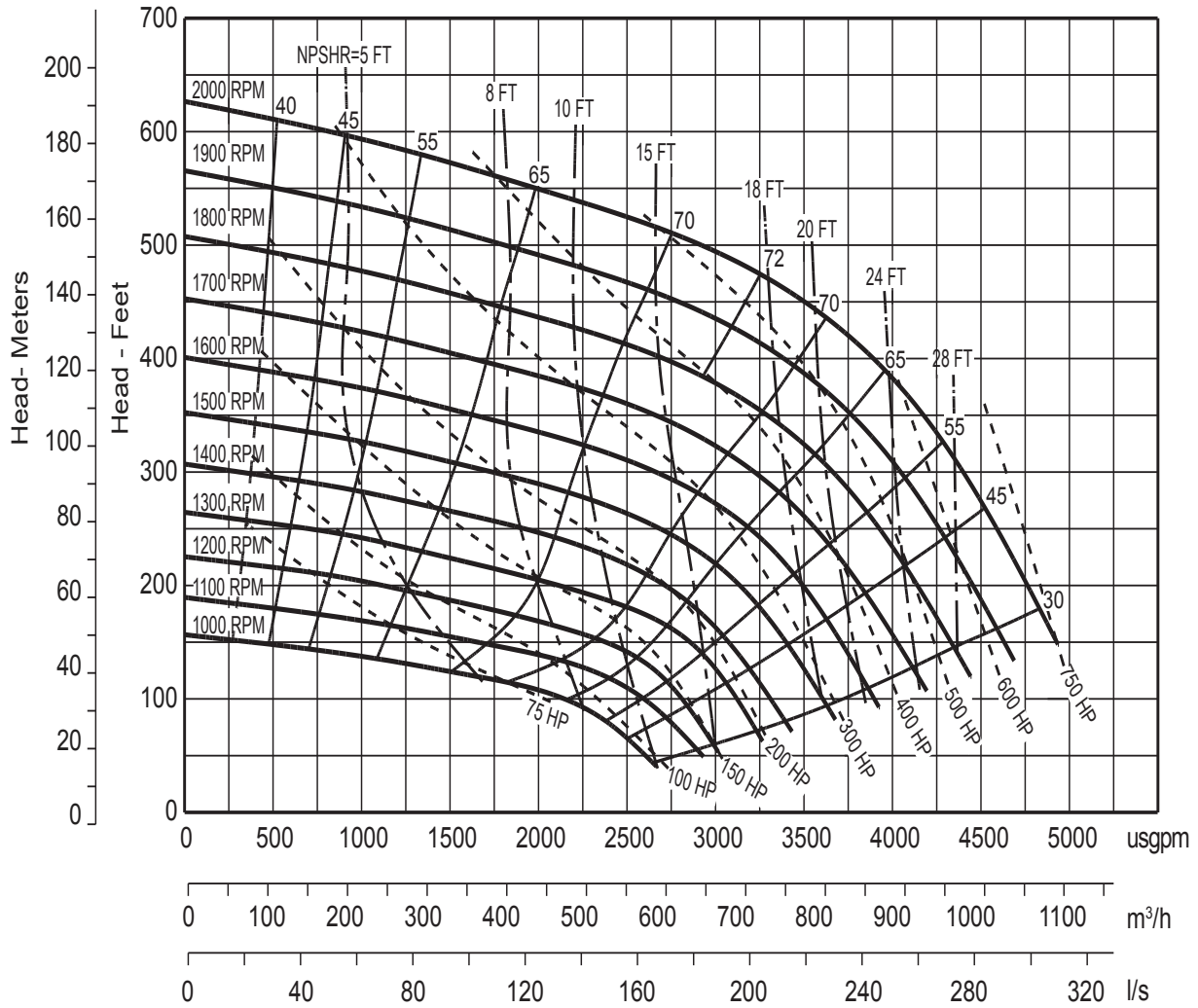
Trash Flow® Dry Prime Pumps

## TFVH 8x6-M™ Series

Automatic Self-Priming  
Dry Prime Venturi Technology



### TFVH 8x6-M Performance Curve



Optional engines and hp available contact factory

Specifications and illustrations are subject to revision without notice. Wastecorp makes no representation regarding the completeness or accuracy of this information and is not liable for any consequential, incidental or indirect damages relating to these specifications.



Wastecorp Pumps USA  
P.O. Box 70  
Grand Island, New York 14072 | USA  
Tel: 888.829.2783 | Fax: 888.883.3320  
sales@wastecorp.com

Wastecorp Pumps Inc.  
50 Shorncliffe Road  
Toronto, Ontario M8Z 5K1 | Canada  
Tel: 416.233.3000 | Fax: 416.233.2300  
info@wastecorp.com